

ConvertXtoDVD version 6 Complete guide

Edited Feb 2016

Based on version 6.0.0.27

Basics

- Basic Conversion.....2
- Main menu.....3
- General Settings.....7
- Menu editing22

Editing tabs under the preview window

- Preview38
- Audio streams40
- Subtitle streams.....42
- Chapters.....46
- Image settings.....48
- Output.....51
- Cut.....53
- Merge or join files.....56

Other quick links

- Batch conversion.....58
- Burn another copy.....58
- Add or edit subtitles58
- Convert PAL to NTSC or vice versa.....58
- How to remove commercials or other unwanted sections of a video58

Quick start guide - basic conversion

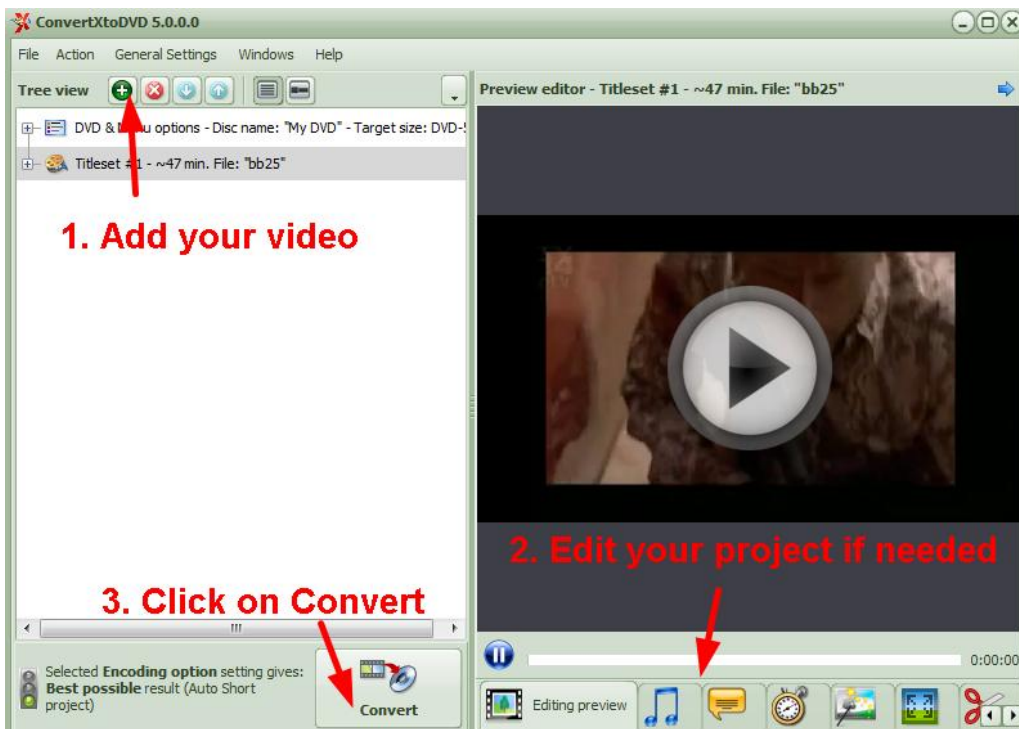
If you're not an advanced user and/or simply want to convert a video (or more) to DVD without any editing, then simply:

1) **Insert your files** into software (drag and drop or use the green cross button to browse your file(s).)
1b) Optional: if you click on the titleset, the preview window will show on the right: you can check the video by clicking on the "play" icon in the middle of the screen. The tabs under this preview lead to most available editing options. More about these options below under 'Overview of editing function in tabs'

2) **Insert a blank DVD** if you wish to burn your conversion straight to DVD

3) **Press "Convert"**.

You're all set!



Now, to make the most of the software and to customize your video to your exact needs, you can go deeper and edit your file(s) in a simple way.

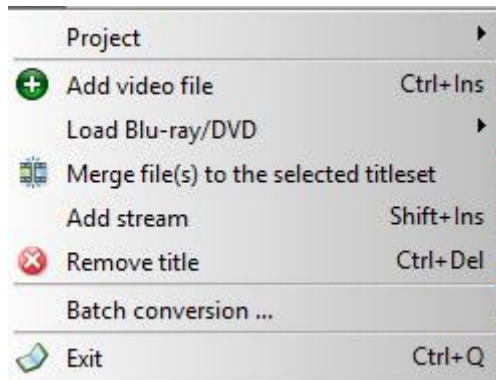
Main menu of ConvertXtoDVD and ConvertXtoHD

ConvertX top options

File Action Default Settings Windows Help/Tools

These options are detailed as follows:

File



Project:

New Project : Start a new project from scratch. A new project is automatically created with saved settings preloaded when ConvertX is first started.

Load Project : Load a saved project that you previously worked on. This will allow you to continue where you left off without restarting from the beginning and without setting up all the options you may have already configured. Do not change the location of the source file(s); otherwise, loading of project will be unsuccessful. The project saves only the file location, not the file itself. The project file name is saved with file extension .XtoDVD or .XtoHD. Note: When you load a saved project into a actual created project, everything is replaced by the settings and content of this previous saved project.

Save Project : Clicking this will save directly a new project or an existing project with all the source file locations and customized settings. The first time you save a project you will be asked choose the location on where you want to save your project and also you are asked to provide a project name. ConvertXtoDVD provides a default project name: My DVD. The project file name is saved with file extension .XtoDVD or .XtoHD.

Save Project as.. : Clicking this will save a project with all the source file locations and customized settings. You will be asked to provide a project name. ConvertX provides a default project name: My DVD. The project file name is automatically saved with file extension .XtoDVD or .XtoHD. You can choose the location on where you want your project saved.

Add video file: Select the video file you want to convert and it will be added to the Tree View window. It will be shown as Titleset #1, followed by estimated time duration and file name. Every additional file added will have the next titleset number incremented, e.g. Titleset #2, #3, etc.

Note: DVD specification allows only a maximum of 99 titlesets to be added.

Add Blu-ray/DVD: if you want to load a (decrypted) DVD or Blu-raydisk or file, use these options for easier selection (from disc/folder/ISO).

Merge files to this titleset: Joins several files together so they will play seamlessly as one titleset. More details are further explained in Merge window editing topic. Once a video file is added, select it (highlight the Titleset #) and click on this function to merge another file to it. For quick access, this function is also available in the "Merge" Tab under the Preview.

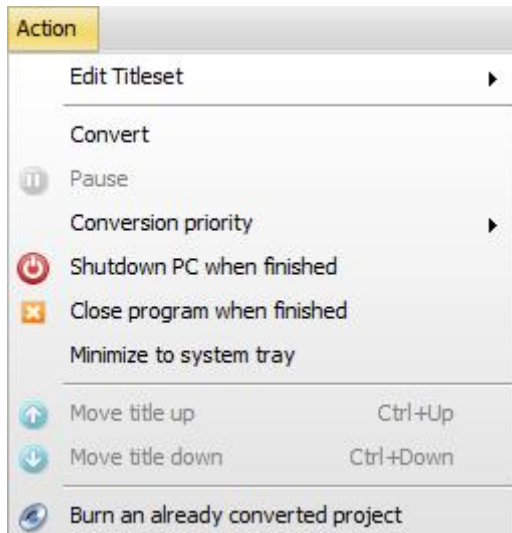
Remove title: Remove the selected titleset in the Tree View window from the current project. The original file still exists on your hard drive. For quick access, this function is also available in the Toolbar and via context menu by

right clicking on the Titleset # node.

Batch conversion (for ConvertXtoDVD only): links to BatchXtoDVD, a free application developed by a third party (not VSO) that enables you to make batch conversions with ConvertXtoDVD.

Exit to close/shut down ConvertX.

Action



Edit Titleset: Shortcut to reach each editing tab for the titleset

Convert /Cancel: Starts or cancels the conversion of your project. Same function as the button in the middle of the Main menu window.

Pause conversion: Pause the conversion at any time during the conversion process. Note: When no conversion is happening this option is greyed out.

Conversion priority: Set how much of CPU resources for ConvertX to perform its task compared to other processes running on your computer. The higher the conversion priority level, the quicker the task will be done but the slower the response for other processes.

Note: Enabled only when there's a conversion in process.

Shutdown PC when finished: Check this option if you want ConvertX to shutdown your computer automatically when the conversion has finished.

Close program when finished: Check this option if you want ConvertX to close itself when the conversion has finished.

Minimize to tray icon: Hides the actual display of the program and show only as a icon in the tray bar.

Move title up: Moves selected titleset up one position (Ctrl + Up): Move a selected titleset up one position in the Tree View window. The titleset number will be decremented by one. e.g. Titleset #2 now becomes Titleset #1. Note: Enables only when 1) Titleset #2 and above is selected and there are at least 2 titlesets in the project, or 2) conversion has not started. This function is also available via context menu by right-clicking on the Titleset # node.

Move title down: Moves selected titleset down one position (Ctrl + Down): Move a selected titleset down one position in the Tree View window. The titleset number will be incremented by one. e.g. Titleset #1 now becomes Titleset #2.

Note: Enables only when 1) the next-to-last titleset is selected and there are at least 2 titlesets in the project, or 2) conversion has not started. This function is also available via context menu by right-clicking on the Titleset #

node.

Burn an already converted project : Select an already converted project

For ConvertXtoDVD: VIDEO_TS stored in the working folder that is set in General tab at Settings) and ConvertXtoDVD will burn it directly to a DVD disk.

This option can also burn any valid DVD video folder (VIDEO_TS=IFO, BUP, VOB) or ISO file that are not created by ConvertXtoDVD. You can only select one(1) VIDEO_TS folder as that is what the standard DVD video disc specifications allows.(The fully finished result is inside this folder)

Note: ISO file burning with the following limitation: The user still select a folder, and if this folder contain an ISO file, it'll be used in priority. If the folder contains several ISO files, the first one will be used.

Note: Disabled only when there's a conversion.

For ConvertXtoHD: select already converted file in HD format, ie index-BDMV, index-bdm or ISO image, insert a BD disk and ConvertXtoHD will burn it straightaway.

General Settings

See the [General Settings section](#)

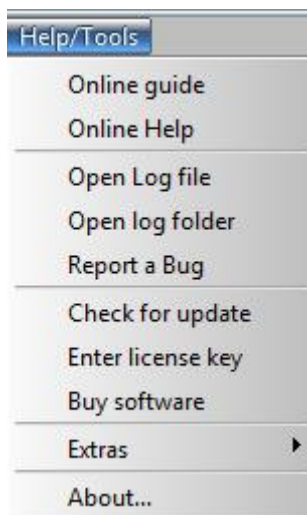
Windows



Click on the Preview and Log to turn them Off/On. If there is a "tick" in front of Preview or Log, then they are displayed in the software windows.

The Log is the history of all the software's actions. Very useful if there is any conversion/burning issue.

Help



Online guide: links to the online guide on VSO website. An internet connection is required.

Online Help: This will direct you into the VSO website where you find several options. An internet connection is

required.

Open log file: Will open a text document (usually opened with the standard Windows application Notepad) containing all the log files of your conversions). The most recent conversion is found at the top of the file. A full conversion log with burning is shown between

```
***** Log session stop 2009-01-22 00:48:15.578 PID 274960*****
```

(info)

```
***** Log session start 2009-01-21 23:53:37.812 PID 274960*****
```

In case of problems, this information is first needed together with a good description of your problem. Both the description and log file information can be posted on the VSO forum / sent to VSO Support team by either copy and pasting into message window or by attaching as a separate document.

Note: All log files are automatically saved by the software. I.E. you do not need to do a new conversion to create and save a log file. All conversions are recorded, saved and stored for you by the software. Log files are stored here C:\ProgramData\VSO\ConvertXToDVD\6\Log or C:\ProgramData\VSO\ConvertXtoHDV2 . You will also find crash logs in this location.

Report a bug: Click here to open and fill in bug report. The report will be sent out to us, containing the relevant information (log files, etc) we need in order to check the issue. Please detail the problem as thoroughly as possible.

Check for update: Manually check if a new version is available at the VSO website. An internet connection is required. If a new version is available click on the download link on the VSO website. You do not need to uninstall the software before installing a newer version, but you do need to close ConvertX on your computer if it is open before installing the latest version.

Enter license key: See topic [Registration](#).

Buy software: Brings you directly to the VSO Shopping page where you can buy a license key. Entering a license key unblocks the software by removing the watermark that is on the trial version. License keys are sent by email immediately after the payment is received. An internet connection is required.

Extras: points out to other VSO programs if you want to carry out specific tasks (download videos, convert in other formats..)

About: Provides information about

- the program, its version number and drivers used in the program
- whether the software is registered or a trial version

General Settings

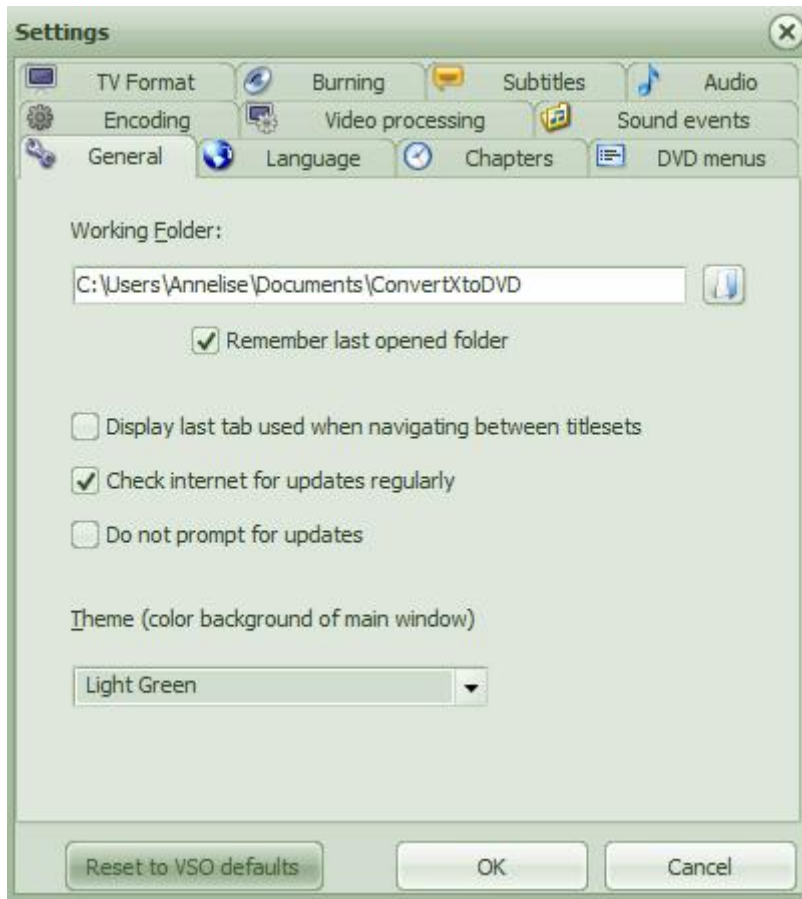
The general settings are the settings that will be applied to your video files and projects by default. It is recommended to modify these settings before adding any videos to your project. These settings will be overwritten by setting made in the Tabs under the preview window. The settings changed in the Tabs under the preview window will only apply to the video file you have selected in the treeview. They will not be remembered for future conversions. To set your preferred settings for future conversions change those in the Default Settings that we will go over here and are accessible in the Top menu of ConvertX: **Default Settings**.

Default Settings



General Settings
General 1
Language 2
Chapters 3
DVD menus 4
TV Format 5
Burning 6
Subtitles 7
Audio 8
Encoding 9
Video processing 10
Sound events 11

1. General



The **Working Folder** is the location where your conversions will be saved. You can change this location and indicate an external hard drive for instance, by clicking on the "folder icon". Make sure to always provide a complete path file here.

For ConvertXtoDVD

In the working folder, you will find a created folder with the same name as from the first added file, containing 2 sub-folders, named VIDEO_TS and AUDIO_TS. VIDEO_TS contains all "data" and AUDIO_TS is always empty and is required by some old DVD players to play.

Note: If you have 2 (or more) hard discs in/at your PC, use one for the Source file(s) and the other to store the converted DVD files. This will optimize the read / write of the files.

Note: Have in this directory (here E:) at least 4.3 Gb (DVD-5) or 8.5 GB (DVD-9) space free , so that the conversion can be stored here, before burning. The program checks before every conversion if this "reserved" space is available in case that the conversion would end up with a 100% (full) disc AND that the newly to be created "result" folder does not exist here (has same name as first added file).

Default installation is: C:\Users\[user name]\Documents\ConvertXtoDVD

For ConvertXtoHD: In the working folder, you will find a created folder with the same name as from the first added file,

Note: Have in this directory (here E:) at least 25 GB BD 25 and 50 GB for BD 50 space free , so that the conversion can be stored here, before burning. The program checks before every conversion if this "reserved" space is available in case that the conversion would end up with a 100% (full) disc AND that the newly to be created "result" folder does not exist here (has same name as first added file).

Default installation is: C:\Users\[user name]\Documents\ConvertXtoHD

Remember last opened folder: If checked, the dialog for adding files will start from last opened folder, else from defined working folder.

Display last tab used when navigating between titlesets: If checked will keep the last tab used open (under the preview window) when clicking on a new titleset in the treeview. Without this options checked editing tabs always goes back to the tab "Preview" which is the equivalent of being closed.

Check internet for updates regularly: Will check for version update periodically as long as ConvertX is running.

Do not prompt for updates: If checked, ConvertX will not display any update availability message and you will not be warned if a new version is available.

The **Theme** of the software interface can be customized with more than 26 colors to choose from. This will change the look and feel of the software applying different colors.

2. Language

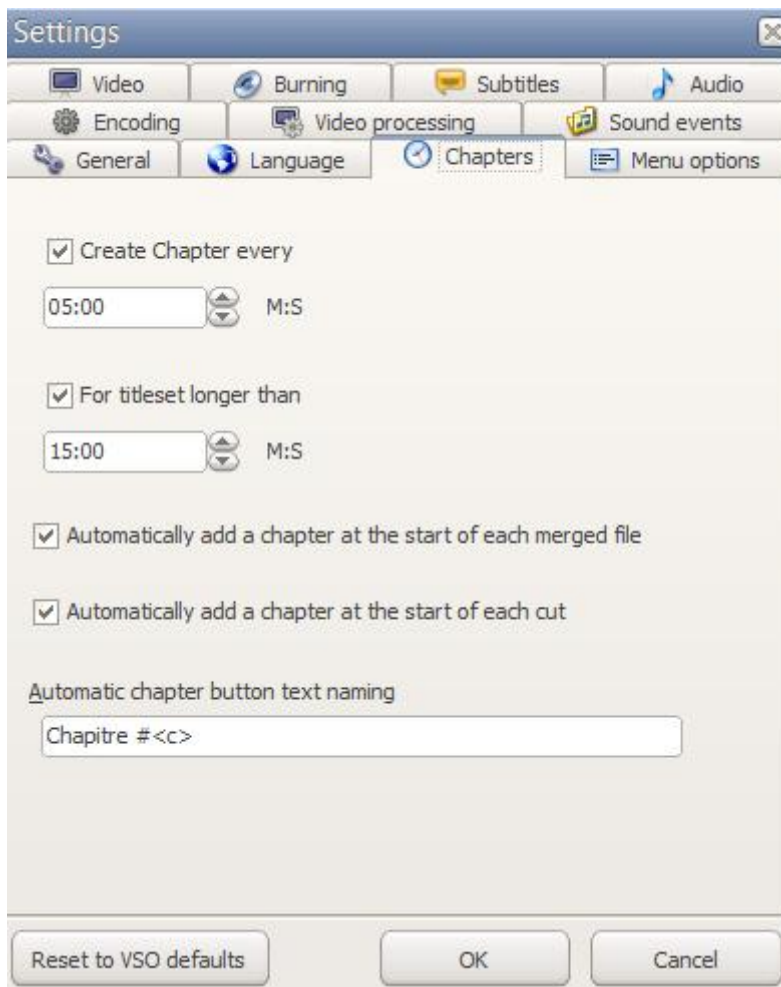
Set the software in your preferred language. If your language isn't in the list, or if you wish to help us and translate ConvertX in your own language, you can contact us: trad@vsossoftware.fr

3. Chapters

The settings you'll select here will apply to the whole project (so all files within the same conversions) while the Chapters tab situated under the preview will apply only to the video selected. More options are also available in the Chapter Tab.

A chapter is an invisible mark in the video that helps you navigate through the film as you are watching it. Instead of fast-forwarding to a specific point you can jump at intervals, these intervals are chapter points that you can determine here.

Note: for ConvertXtoDVD only, A maximum of 99 chapters points can be created. This is limitation set by DVD standard not ConvertXtoDVD.



ConvertX automatically imports the original chapters that are on a video file. If original chapters are found, ConvertX will not apply its default chapter settings below, however if you go into the General settings and when you leave select **"yes"** for "Do you want to apply the new settings to the current project?" then the ConvertX chapters as defined in the general settings will be applied to your project replacing the original chapters.

Create Chapter every

Allows you to automatically insert a chapter every X minutes or seconds. M = minutes, S = seconds

If unchecked, no chapters will be added automatically. This setting works in pair with **For titleset longer than** so make sure to read it below. A chapter point will always be created at start of file. You cannot delete this first one !!

For titleset longer than

Inserts a chapter at the value indicated above only if the video is longer than the specified duration (default set value is 15 minutes). For example this means that no additional chapters will be added if you add a video that is only 10 minutes long, e.g. suitable for music video clips.

Automatically add a chapter at the start of each merged file: if you merge files together a chapter point will be added at the beginning of every file merged for easier navigation.

Automatically add a chapter at the start of each cut: a chapter point will be added at the markpoint of every cut for easier navigation.

Automatic chapter button text naming

Here you find how the text will appear for the chapter buttons in the menu.

With these settings it will show in the menu buttons:

Chapter # 1 : The text "Chapter" is modified in this section or in the Menus section, menu labels.

The used variable can be changed as in the list shown.

Change the variable between brackets < >. The brackets< and > are not shown in the final menu button.

some examples:

-Chapter # --> Chapter # 1

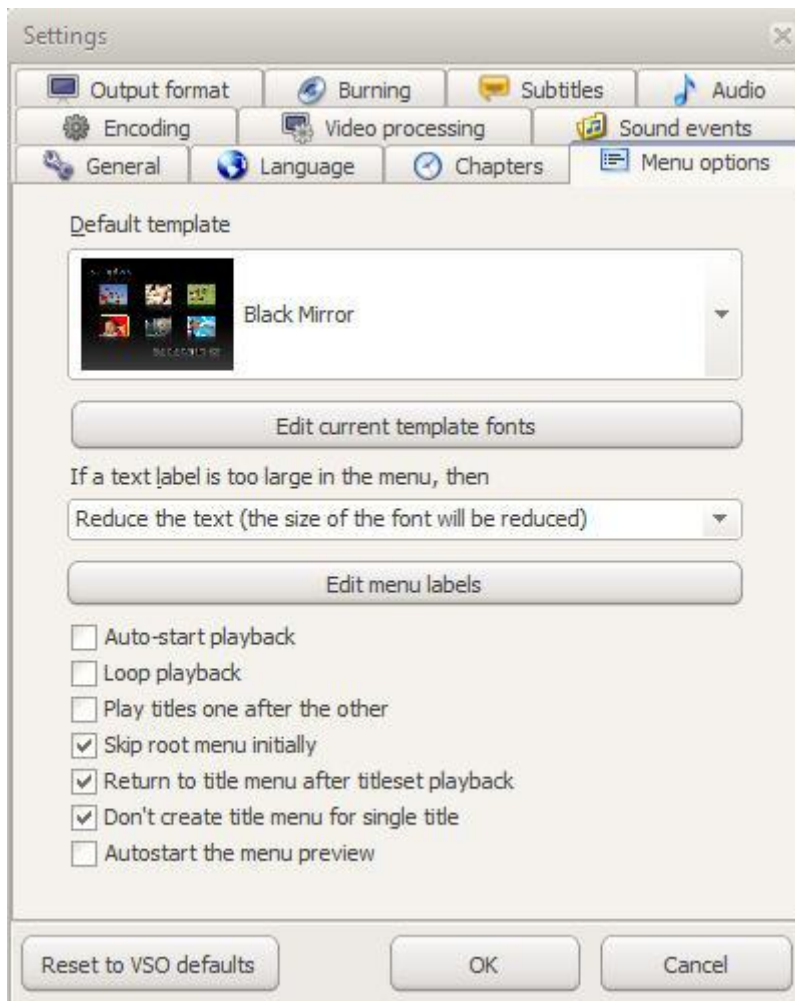
-Chapter # of --> Chapter # 1 of 4 (value of 4 depends on the amount of created chapters)

-Whatever --> Whatever 1

You can combine variables in a text line.

4. Menu options

Different menu templates come with the program, you can also get additional ones or create your own if you have some developing skills. Some guides have been made on the subject, for the links please see the section Menu templates on [this post](#).



You can select one of the many templates in the drop down menu. All templates have their own characteristics and options. For a complete outlook on menu templates and customization, please check out [this guide](#).

The **Edit current template fonts** button opens a text editor which will allow you to edit the text appearance used for the menu template selected just above. Details in this [forum post](#).

You can decide what to do if the **text label is too large** (name of titleset, etc..) and won't fit on the menu screen: reduce text, crop it, ignore or cancel conversion.

Click on **Edit DVD labels** if you want to change the name of the menu items: Settings, Subtitles, Audio, Play, etc. You can press F2 to make the fields under **Default text** editable or you can double click.

The following options will impact the behavior of the disc when played in a DVD/Blu-ray player:

Auto-start playback: when disc is inserted, skip menu and plays the first title/video immediately

Loop playback: when the last title finished playing, the first title will play again

Play titles one after the other: plays titles/videos one after another without going back to the menu at the end of each title.

Skip root menu initially: when a title is selected from the title (main) menu, it skips the root menu and plays the title directly. This option is ignored if there is no title menu.

Return to title menu after titleset playback: when a title finishes playing, you are brought back to the title (main) menu instead of the root menu. This option is ignored if there is no title menu.

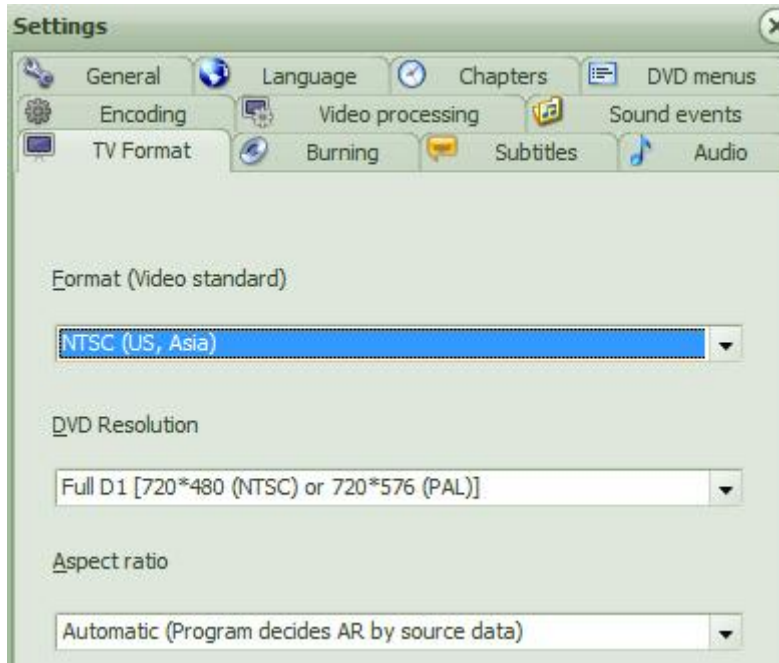
Don't create title menu for single title: if there is one titleset only, the title menu will not be created. A title menu is useful if many videos are converted as it is the menu that allows you to select which video to play. This title menu is not useful if just 1 video is being converted.

Autostart the menu preview: useful when editing files in the treeview. If checked and if you click on a menu

item in the treeview the menu will play in the preview window instead of having to first select the item in the treeview and then press the play button in the preview window.

5. Video / Output format

For ConvertXtoDVD:



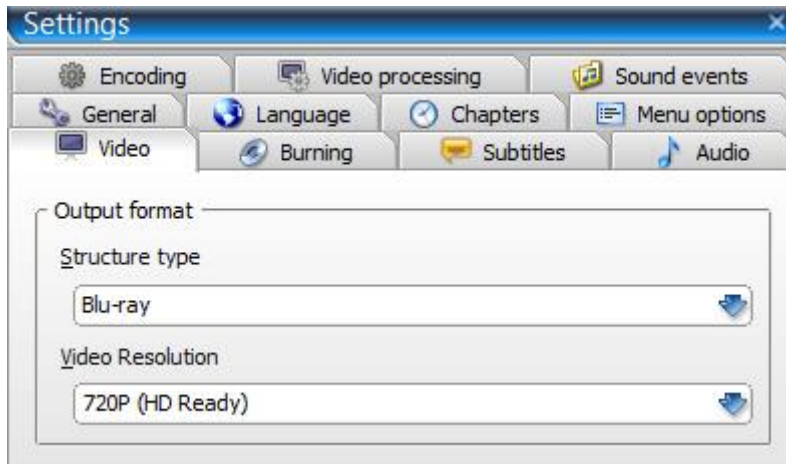
In this tab you can specify DVD format defaults that will be used. You will be able to customize video format options within each project individually in the Output Tab under the preview window.

Make sure you select the right **Format (Video Standard)**: PAL for Europe, NTSC for the USA (There is a possibility that you cannot play the DVD because of wrong Format, as not all DVD players/video playing equipment can rea/play both formats (PAL/NTSC). If you're not sure which format is used in your country you can check out [this list](#). **Automatic** will use the format/frame rate closest to that of the first file in the project and apply it to the rest of the files. By default ConvertXtoDVD always outputs progressive playback file. If pulldown is used for the conversion however the playback will not be progressive.

The **DVD Resolution** is the quality of the image. The different resolutions available (they are ranked according to quality, Full D1 being the best quality). The higher the quality, the more "heavier" your project will be. We recommend leaving these settings on "Automatic". Default is Full D1 resolution; you may however change this to a lower resolution to fit more videos onto one disc (will reduce image quality). Select Automatic to let ConvertXtoDVD decide the resolution based on the resolution of the source file.

The **Aspect Ratio** allows you to select whether you want the converted video file Aspect ratio to be set automatically or either be full screen (Aspect ratio 4:3) or widescreen format (Aspect ratio 16:9). We suggest leaving this on Automatic as Automatic will set the aspect ratio closest to that of the original videos. In the Output tab under the preview window you can see what aspect ratio was set per titleset/video added in your project. A project can have videos with different aspect ratios. In the Output tab you can change the aspect ratio which will override the Aspect ratio set in the general settings.

For ConvertXtoHD:



Structure type:

Select Blu-ray or AVCHD depending on what is compatible with your player and also depending on what type of disks you want to burn your conversion to.

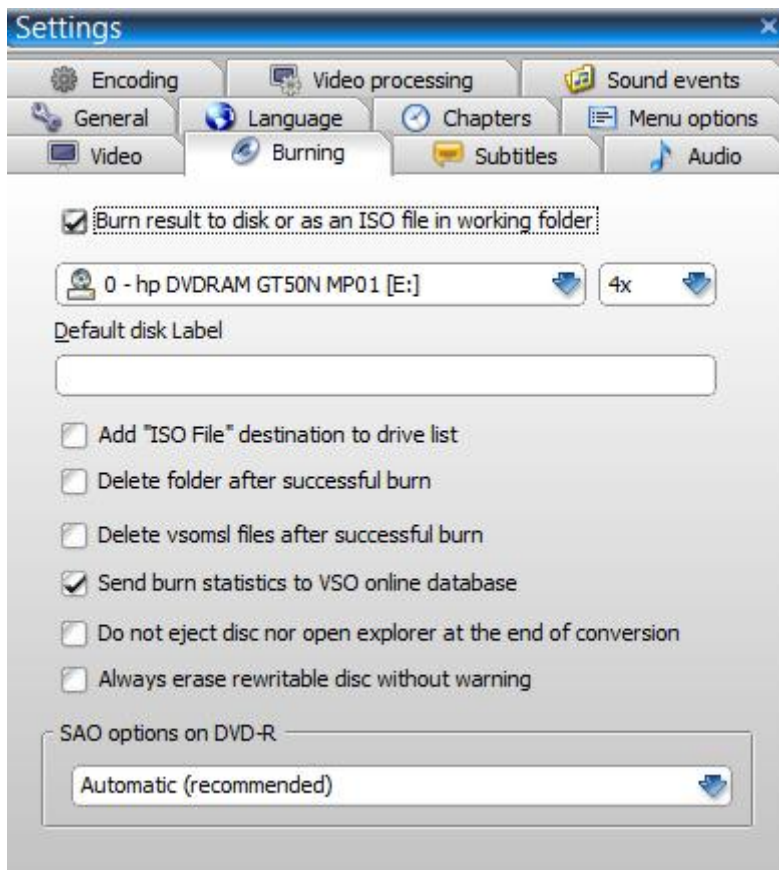
Blu-ray structures can only be burnt on Blu-ray disks. AVCHDs can be burnt on Blu-ray, DVDs, or transferred to USB.

Basically these structures are the same, the folders and files in the structure are not the same and perhaps not the codecs inside, but the way they play should be identical.

Video resolution:

Select the resolution you want for your conversion.

6. Burning



Burn result to disc/ as ISO file in working folder: If checked, program will burn folder files to disc after conversion has finished (when a blank disc has been placed in burner and this type can hold the amount of created "data"). If not checked, the files will be saved in the working folder on your computer. Also you can select between an ISO image or your default burner. You must set ISO image before you start add video file(s) in a new project.

In the drop down menu, the burner detected is listed, if you have more than one they will be listed too and you can select the one of your choice.

On the right you can also set your **burning speed:** Recommended speed for Single Layer (DVD-5) is 4x or 6x, but do not go faster than half of the rated speed of disc. For Dual Layer (DVD-9) we recommend 2x. Note: the burn speed that will actually be used is the burn speed that is available for both your drive and disk (each have their own allowed speeds). Example if you select to burn at 2x, but your disk only allows for 4x, 6x, and 8x the disk will not be burnt at 2x as requested but the closest speed to that which case it would be burnt at 4x speed.

Default disc Label: Default text to be used for menu title and name of the disc. Leave empty to use the name of the first video file.

Add "ISO File" destination to drive list: if you wish to be able to create an ISO file instead of burning to disk.

Delete folder after successful burn: Once the burn is successful, the working folder will be deleted to save hard drive space. Source file(s) is/are not deleted.

Note: If you want to burn multiple discs from this project, uncheck this option before you begin the conversion.

Delete vsomsl files after successful burn: will delete the vsomsl files that are created when loaded into a VSO product. These vsomsl files allow the files to be loaded faster the next time (they will not be parsed again to create correct timestamps that were not in the original file.

Send burn statistics to VSO online database: Will send burn statistics to VSO, requires an internet connection. The statistics are anonymous - no user or personal information is collected.

Do not eject disc nor open explorer at the end of conversion: The disc will not be ejected NOR the folder or ISO file will not be opened in your explorer when the conversion is completed.

Always erase rewritable disc without warning: Always erases an inserted rewritable disc without confirmation warning.

SAO options on DVD-R: Specifies the burn method for DVD-R media used by ConvertX. This should be left to Automatic, unless you have problems burning to DVD-R media. Possible choices are: force or prefer SAO or packet writing methods.

7. Subtitles

Here you can define the default settings related to subtitles. To edit subtitles for per project and see a live rendering of your changes, go to the Subtitles tab under the preview.

Default Subtitle language (identifier): This is the setting for the default language identifier which is assumed for all added subtitle files if they do not provide the information themselves on what language they are in. In otherwords if a language of a subtitle file is unknown ConvertX will identify it with the language set here (by default being "unspecified").

When is the language identifier useful? A DVD/Blu-ray player will display this language abbreviation (identifier) when you select subtitles to play when using the 'subtitle' button on your remote control.

Text subtitles rendering settings: This button opens up the Subtitle Style Editor, proposing advanced subtitle editing possibilities.

Subtitle text style Editor window

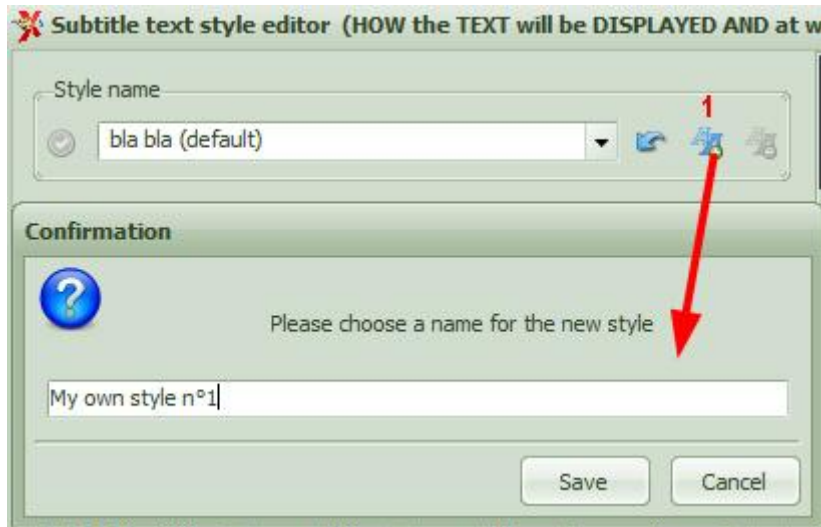
Applies only to SRT subtitles. Other subtitles have their own formatting and cannot be modified in ConvertX.

In this window basically change the settings to make the text appear as you would like. A preview window on the right will help you visualize your changes. Press OK when you are done and if you select "yes" to "Do you want to apply the new settings to the current project?" then those new settings will apply to any files you have added to ConvertX or they will be used in your next conversion. These changes you made will now be your default subtitle settings for all your future conversions.

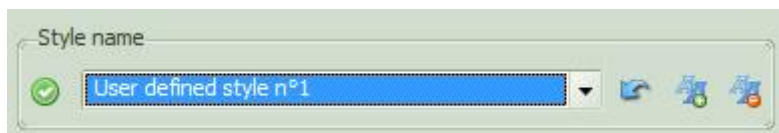
You can create as many styles as you want. Reasons to do so: perhaps you want to make a different style for each of your family members and you can apply that style each time you make a conversion for them.

To add a **Style name**:

Click on the Aa+ icon, and enter the style name of your choice:



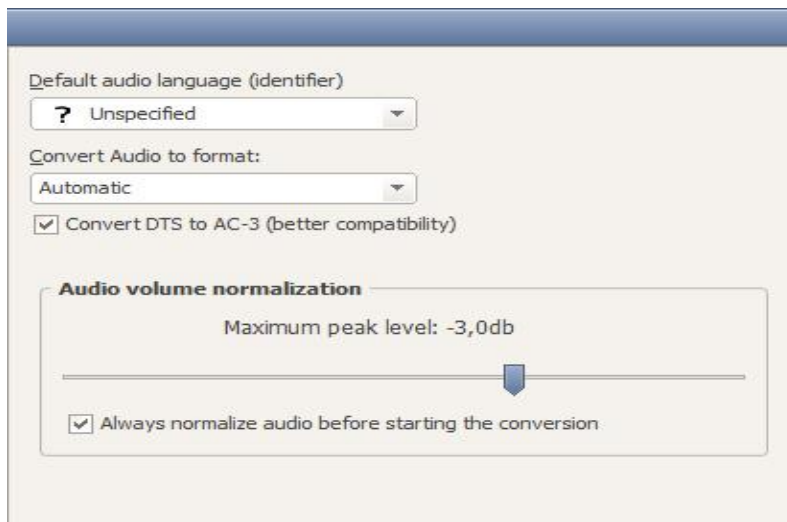
Pick your preferred style in the editor (color, font, etc) then click on OK at the bottom to save it. If you want this customization to be applied by default to all your projects, click on the green check mark icon on the left of the style name drop down selection (seen in image below).



To delete a style you made, select it in the drop-down menu, then click on the Aa- icon. To reset the style to ConvertX default values, click on the arrow icon on the left of the drop-down menu.

The icon of an arrow pointing to the left will restore default values for subtitle settings and apply that to the style selected in the drop down menu.

8. Audio



On this tab you can specify audio defaults that will be used at start-up / for new projects. You will be able to customize these audio options within each project individually as well in the Audio Tab under the preview.

Default audio language (identifier)

This is the setting for the default language identifier which is assumed for all added audio files if they do not provide the information themselves on what language they are in. In other words if a language of a audio file is unknown ConvertXtoDVD will identify it with the language set here (by default being "unspecified").

When is the language identifier useful? A player will display this language abbreviation (identifier) when you select audio to play when using the 'audio' button on your remote control.

Convert Audio to format - Automatic: The automatic setting keeps the same number of channels, and if the source is a stream compatible with DVD/Blu-ray, then it is simply copied without any modification (unless there is a sound treatment required, such as audio normalization, Convert DTS to AC-3, ...)

Automatic will always output a supported DVD formats (and if it needs to be changed will be converted to AC-3), with the same number of channels if it is possible

- AC-3, 5.1: Converts audio source stream to AC-3, 5.1 channels even if source contains less or more than 6 channels. When selected, it'll be matrixed and down/up mixed to the 6 channels.

- AC-3, 2.0: Converts audio source stream to AC-3, 2 channels. When selected, it'll be matrixed and down/up mixed to the 2 channels.

- MPEG: Converts audio source stream to MPEG format, with an output of 1 or 2 channels. If necessary it will be down mixed. *Option not available in ConvertXtoHD.*

Note: To keep DTS (whatever) audio stream, select "Convert audio to format" to Automatic and uncheck "Convert DTS to AC-3" also you cannot use any audio level- normalisation.

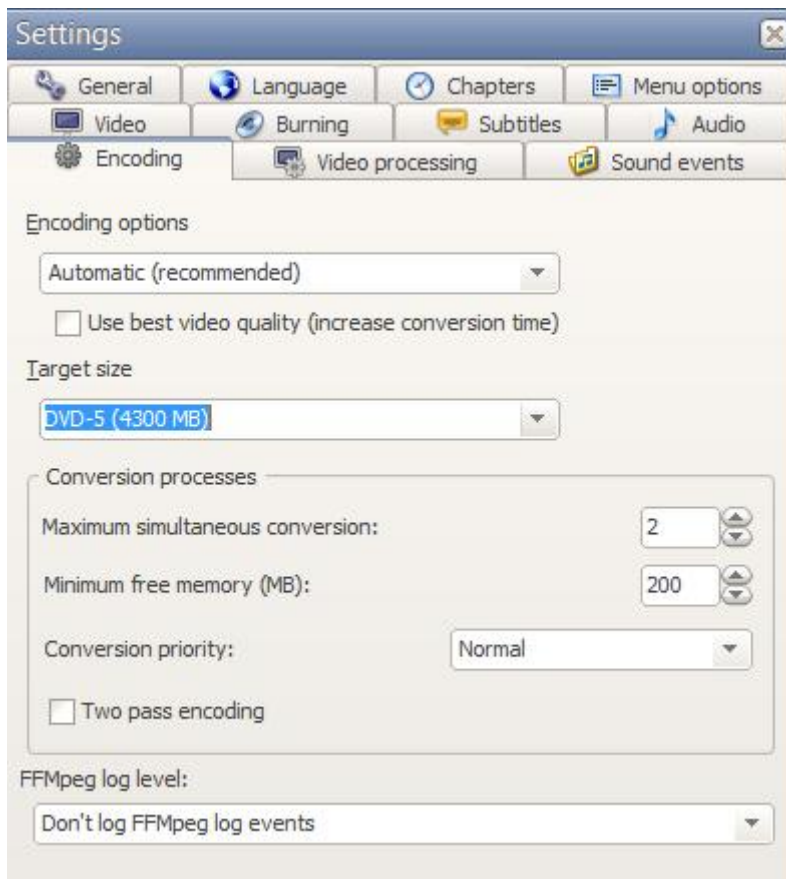
Not all players support DTS so if this option si unchecked, you might not be able to hear any sound.

Audio volume normalization

The audio normalizer analyzes the audio stream of the video and sets it at a normalized level to make sure the sound is perfectly audible throughout the video and videos of your project. By doing this you will no longer need to jump up and run to get your remote control to adjust the volume as you watch different videos on your DVD.

Once you add a file to ConvertX if you click on the audio tab under the preview window and click to edit an audio stream your will see a magic wand button. Clicking on that button will normalize the audio stream based on the value displayed here. If you check the box to "always normalize audio before starting the conversion" it will do just that.

9. Encoding



Encoding options:

Automatic setting: Use Automatic if you have no clue what the other options mean - even if you do have a clue it is the recommended setting for the best results. The program will decide for you what setting to use to achieve the best possible video quality.

Manual settings: You can manually select one of the 3 encoding profiles should you want more control. This may not be the optimal setting if you forget to look at the total project length in the status bar of the main window. The project length is the Total time shown in the CX status bar as source files are being added to the project.

Here's the tooltip:

SP (Short Projects): Use SP if your project has a total length up to 80 minutes.

MP (Medium Projects): Use MP if your project has a total length up to 160 minutes.

LP (Long Projects): Use LP if your project has a total length of 160 minutes or more.

The Encoding option advisor will still advise you what setting to choose when the light turns yellow or red as it evaluates the total project length.

Use the best video quality: if this setting is enabled, the video encoder will be set with special settings increasing the video quality (but decreasing the conversion speed . . .)

Target size

For ConvertXtoDVD:

You can choose your target size DVD-5 (Single Layer, 4.7 GB), DVD-9 (Double Layer, 8.5 GB), or a custom value (in MB).

For ConvertXtoHD:

You can choose your target size BD-25 (23000MB), BD-50 (46000 mb), DVD-5 (Single Layer, 4.7 GB), DVD-9 (Double Layer, 8.5 GB) or a custom value (in MB).

The program will make sure during conversion that the output file size is small enough to fit on the type of target size you selected. On average, about 4 hours of normal compressed video file can be converted and burned on to a DVD-5 without losing significant amount of quality.

It depends on the source file if the DVD will be fully filled.

Note: If you have unchecked the option [] Burn result to DVD, and used the target size DVD-9, you can check by looking in the log file if your conversion will even fit on a DVD-5 (cheaper) disc. A blank DVD even though the packaging says 4.7 GB only has around 4.3 GB of space available.

The storage industry standard displays the capacity in decimal. Even though in binary you have more bytes, the decimal representation of a gigabyte shows greater capacity. In order to accurately understand the true capacity of the medium, you have to know which base unit of measure (binary or decimal) is being used to represent capacity.

For DVD, the computer uses the Binary Value to tell the capacity of the disc. With this value, the program can surely burn a converted project, even if it has gone a little bit over target size (100%+) in case of "wrong" assumption.

Maximum simultaneous conversion: indicates how many simultaneous conversions can be made, in case you've got more than 1 titleset. The max number of simultaneous conversions you can select is determined by the number of cores in your hardware.

Minimum free memory: indicate the minimum of free memory that you want to keep while the converter is working, if you want to do additional tasks on your PC during the conversion.

Conversion priority

If you are doing other tasks at the same time on your computer you can set the priority level in which your computer will treat the conversion in order not to slow down your other tasks or to prioritize the conversion instead. Generally, it is best to run ConvertX without any background tasks going on.

Two-pass encoding

ConvertX encodes the video with a variable bitrate, which is best for quality, using a customized Constant Quality encoding method. This means that if a scene is "complex" (example: with fast movement), the encoder will reserve more space for this part of the video than for simple scenes (static) with less information (elements). The more/longer the video you want to put on a disk, the lower the average video bitrate must be, so it is more important to save some space during "slow" or static scenes to provide more space for "fast" action or detailed scenes. In the two pass mode, the first pass encodes the video but does not write the video to the disk, analyzing and taking notes of the video file in order to get an overview of the whole video file including specific information about scenes. The second pass has the job of doing the actual encoding. When the second pass starts to encode, it has for each frame the value of the complexity (including other information such as motion vectors, ...) determined during the first pass. So, the encoder is capable of distributing the bitrate exactly where it is required, taking the whole movie as reference. Audio encoding is done in second pass.

If unticked/unchecked) then the software will use the Single pass encoding: The encoder doesn't know the complexity of the scenes because they were not yet played. So, averaging the bitrate must be done within a small portion of the video (a few seconds). Thus, it may occur that if a complex scene arrives, but to maintain the average bitrate over the slice of video considered, there is not enough bitrate available to handle the scene, thus giving artifacts. Because ConvertX uses a smart encoding process based on the Constant Quality encoding method rare will be the number of 2 pass conversions that will give better quality than simply 1 pass conversions.

Additional encoding information

So, whether you select single or double pass the average final bitrate for video will be the same, however inside the movie the distribution of that bitrate may be different - it is not completely different as single pass. Often it is ok for most of the time to allocate the proper amount of bitrate when it is really needed; however, slight differences may occur especially when the encoded movie is long. The quality difference will be visible mostly when there is fast action scenes, double pass will tend to produce less square artifacts than single pass.

In summary, single pass provides a default fixed bitrate reserve which evolves as the encoding occurs. In two-pass the bitrate reserve is maximal in each frame as it is allocated taking the whole movie into account; but when there is not enough bitrate in reserve, then CQ encoding has to be dropped, so "normal" VBR is used.

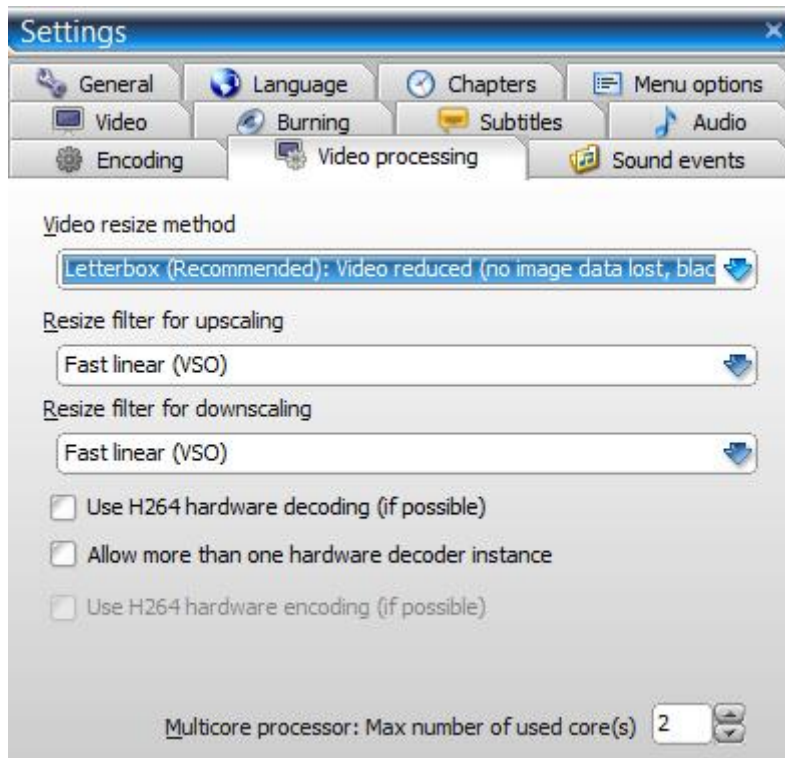
Due to the intrinsic behavior of the FFMPEG encoder, when the average video bitrate is above 5 Mbps (quantization factor is 1 for Short project), the benefit of the two-pass tends to be smaller. However, if the bitrate is below that, then two-pass will result in more frames encoded with the smaller possible Q (smaller is better, Q=1 is

better as Q=2). Also when the DVD is not filled to the specified target size, the quality difference between single pass and two-pass is minimal, so two-pass probably is not necessary.

Note that the average video bitrate for Short project will always be higher than Medium and Long project, largely in part the project length is short.

Additional information about 2 pass: <http://www.afterdawn.com/glossary/terms/multipass.cfm>

10. Video Processing



Video resize method: Select how videos will be resized to fill / fit the screen by default. For more info and see how the image is resized live, check out the [Output Tab](#) in the preview.

Resize filters: These filters are written from scratch and possibly are similar to the existing original filters from the respective creators.

Search the internet for their intended working and purpose of the filter. Testing at VSO shows that Lanczos gives the best result for majority of conversions.

Some filters have longer processing time and maybe better quality than others due to the complexity of the algorithm. You will need to decide which filter works best for your source.

Hardware decoding: Checking this option may give faster results depending on your computer and graphic card (basically if you see less than 30FPS for the encoding of titlesets then try checking this option to get faster conversion times). For a complete description of this setting please [read this post](#).

Allow more than one hardware decoder instance, if graphic card supports this function then this will allow the conversion to be completed faster, but the conversion could fail or end in an error this is all based on your video card's capacity to process this request.

For ConvertXtoHD, hardware encoding H264 is available if your PC configuration permits it.

Multicore processor support: You can set how many cores of your processor are used while running

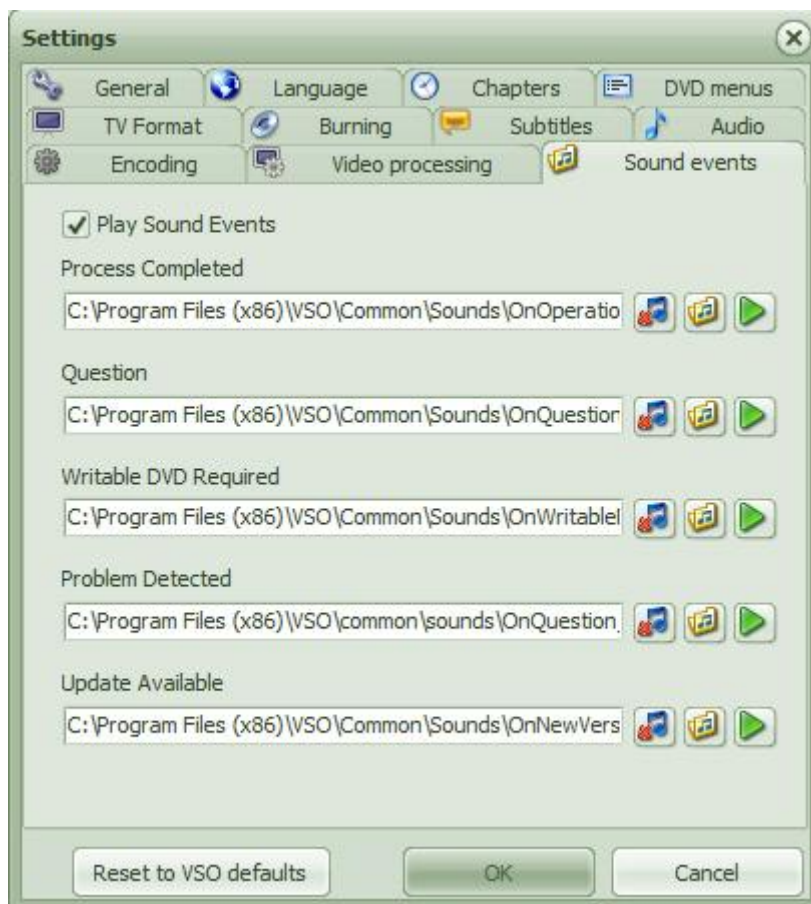
ConvertXtoDVD, while the remaining(s) is/are used for other programs.

Recent microprocessors embed several cores (physical and logical). Each core can work (in theory) in parallel, independently. Multicore support is a technique that allows a task to be split up to different cores of the PC. It involving intensive CPU computation.

For instance on a quad core and selected 4 cores, the operation to resize the frame, the picture (frame) is chopped into 4 parts, and each part is resized in its own core. The speed gain is always LESS than the number of cores selected, mostly because all cores are not physical cores (thus they cannot really work independently), and also all the cores must be synchronized at the end of their work, which in fact consumes time. So, speed gain due to multicore support is bigger when used with high definition source content and high quality resize filters, and may even degrade performances when used with low definition source content.

****De-interlacing****: This option was available in previous version ConvertXtoDVD 4, and is now gone in Version 5 which now handles this treatment automatically.

11. Sound Events



Tick or untick on "Play sound events" to turn on/off the vocal indications guiding you through the software: warning in case of problem, telling you when the conversion is over, etc.

Process Completed: Is played whenever an operation has been finished (i.e. conversion or burning process is done).

Question: Is played when the application needs you to make a selection in order to continue.

Writable DVD Required: Is played when you need to insert a media to burn.

Problem Detected: Is played when an error or other problem has occurred.

Update Available: Is played when a newer version is found online.

If you want to disable one or more of the sounds, click on the music note icon with the red X next to the file.

Customize the Sound events: You can customize the played events by adding other audio files. To change the default file and add your own, simply click on the folder with the music note icon, browse for your file and. Click on

the green play icon to check your selection.

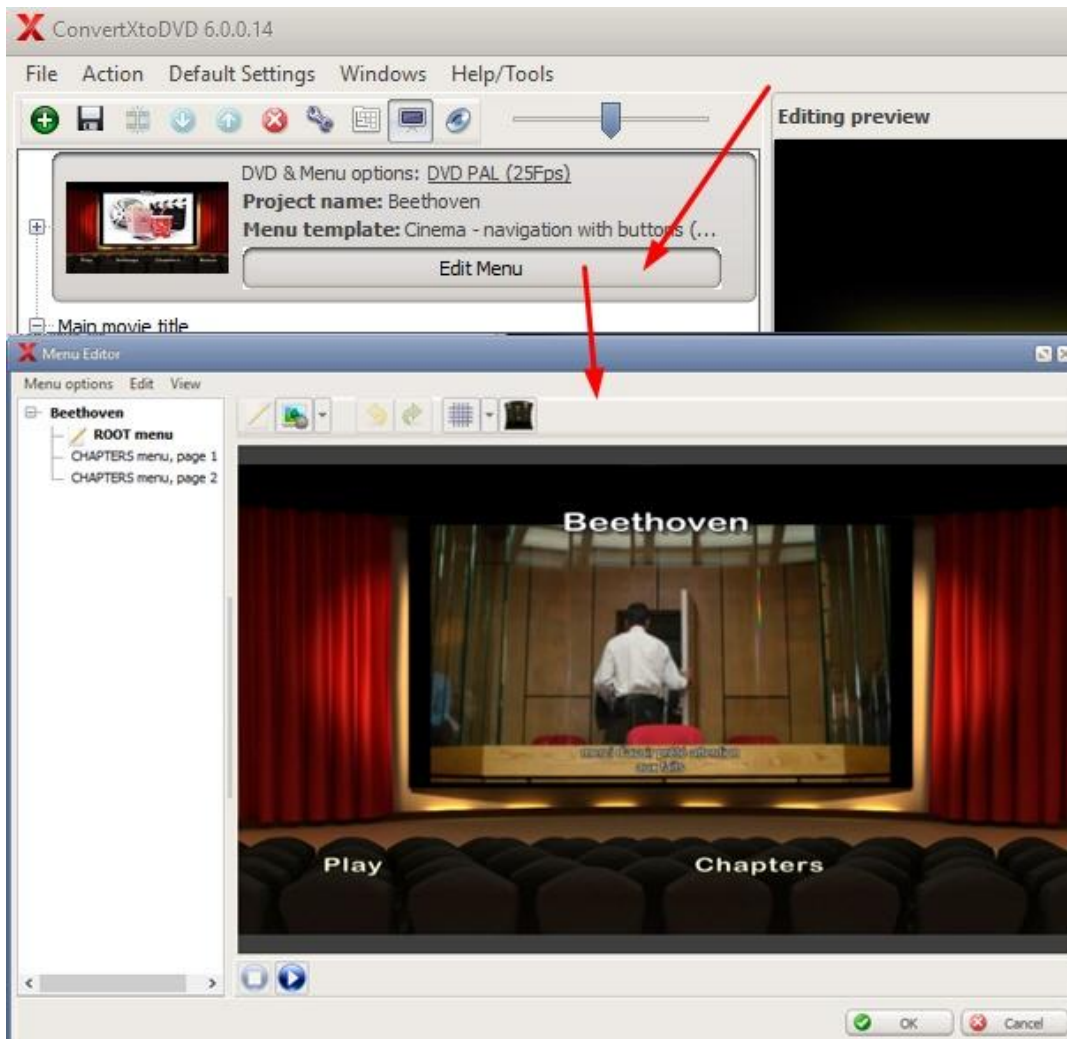
For a fun use of this feature, we have packaged a few sounds from various known characters (cartons, movies, etc). They can be downloaded from [our forum](#).

ConvertXtoDVD 6 Menu Editor

ConvertXtoDVD 6 comes with a brand new **menu editor**. It's very intuitive and easy to use, but a little guide can't hurt, so here is how to fully customize your DVD Menus in just a few clicks

You can also check the **Edition tools summary** at the bottom if you're in a hurry.

- 1. Load a video file: the treeview will be displayed, and to access the menu editor, click on **Edit Menu** in the DVD & Menu options that is at the top. This will open the Menu Editor.

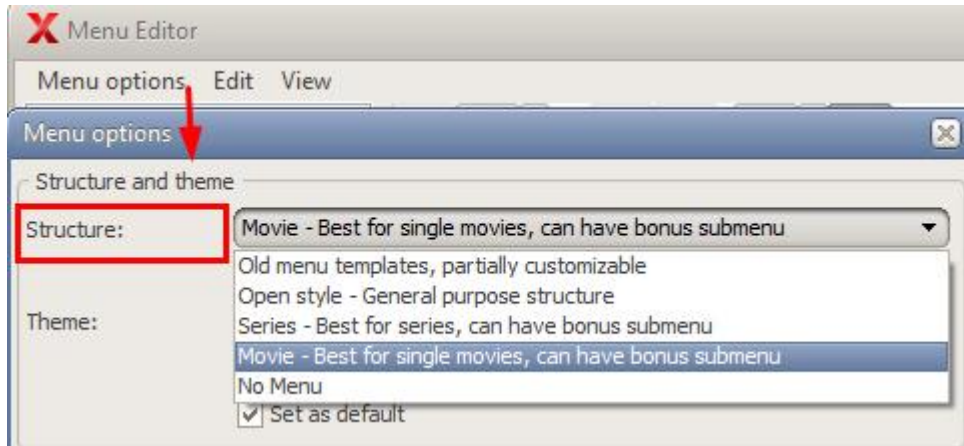


The menu editor offers different template structures specially adapted for different types of projects.

2. Determine here the **type of project** you are going to convert: is it a single movie, or more than one video?

- **Old menu templates:** If you [install them separately](#), these are the templates you were accustomed to in the software's older versions. These templates are not fully editable. You can move items around but you cannot resize them. [Download old templates here](#).
- **Open Style:** if you want to control every detail, these templates are fully customizable and have no limitations structure wise
- **Series:** Designed to display more than one video, so perfect for series episodes for instance

- **Movie:** If you only have one video in your project (the menu will display only one movie, if you have other video files , they will be accessible through the Bonus section.)
- **No menu:** no menu will be generated so when you insert your disk to play you can navigate through your videos using the remote control buttons > to jump to the next title skipping through chapters if there are some in your videos.

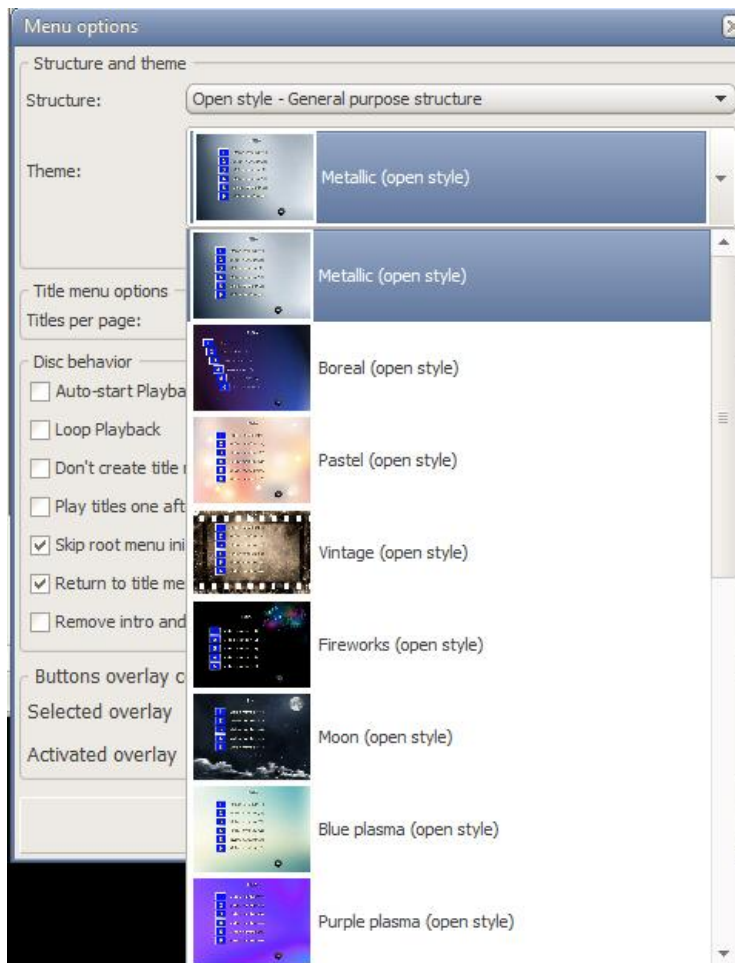


3. Click on **Menu Options** in the top menu, then click on the **Structure** drop down menu:

Select the **Structure** most fitting to your project, and then in **Theme** choose the template style you like best.

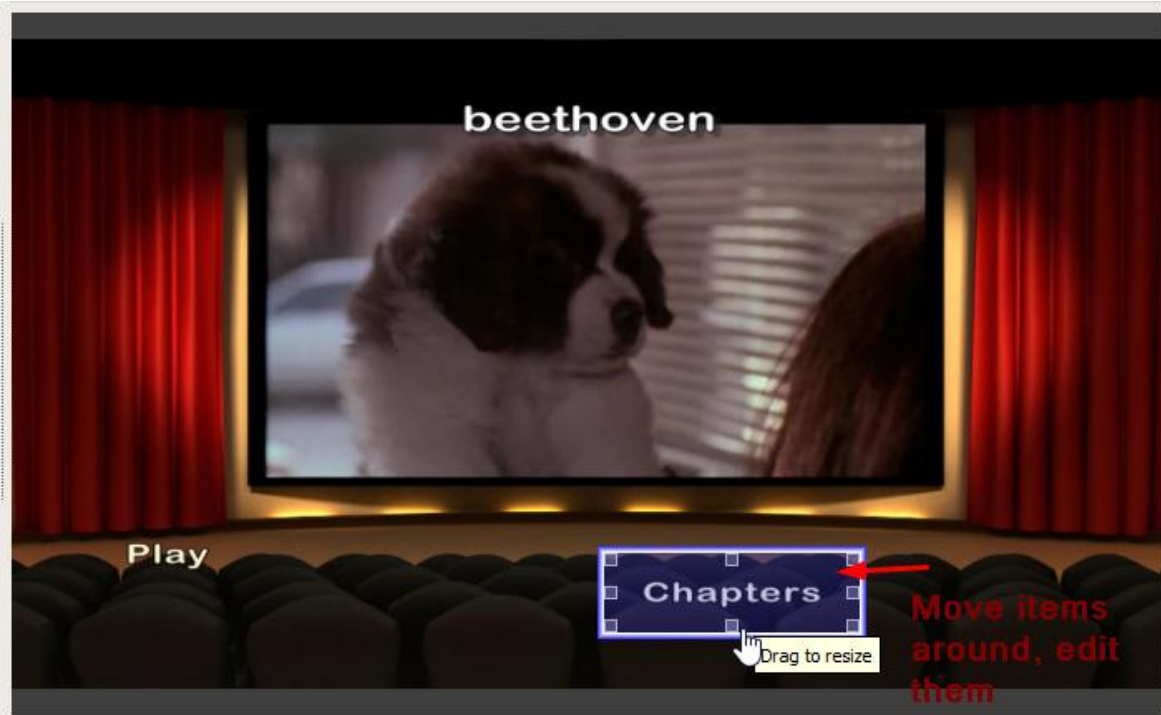
*Tip: If you want to see a preview of each theme keep the **Menu Options** window open off to the side of the preview window and use the arrow keys of your keyboard to navigate through the list. In the preview window you will see "in big" the theme selected. The loading process of the theme will be more or less fast depending on how fast your computer is.

If you do not find a ideal "Structure" for your project, we suggest selecting the "Open Style" and you'll be able to replace any theme background images by your own (picture or video). If you always want to use this structure and theme every time check the "Set as default" box.



Once your selection is done it will appear in the preview: now the fun starts, and it's pretty straightforward: by clicking on each item you will be able to edit and move them around. By clicking on the background, you can also edit it or replace it by a video or picture of your own.

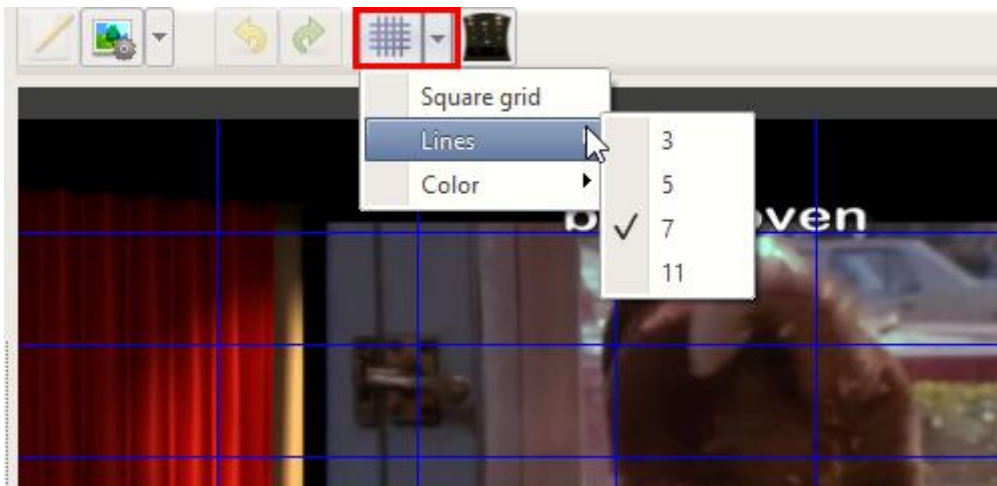
Let 's take for example the Movie structure, Film template:



To **move items around**, click on the item and drag it to the desired position (leave your finger on the mouse and release when done).

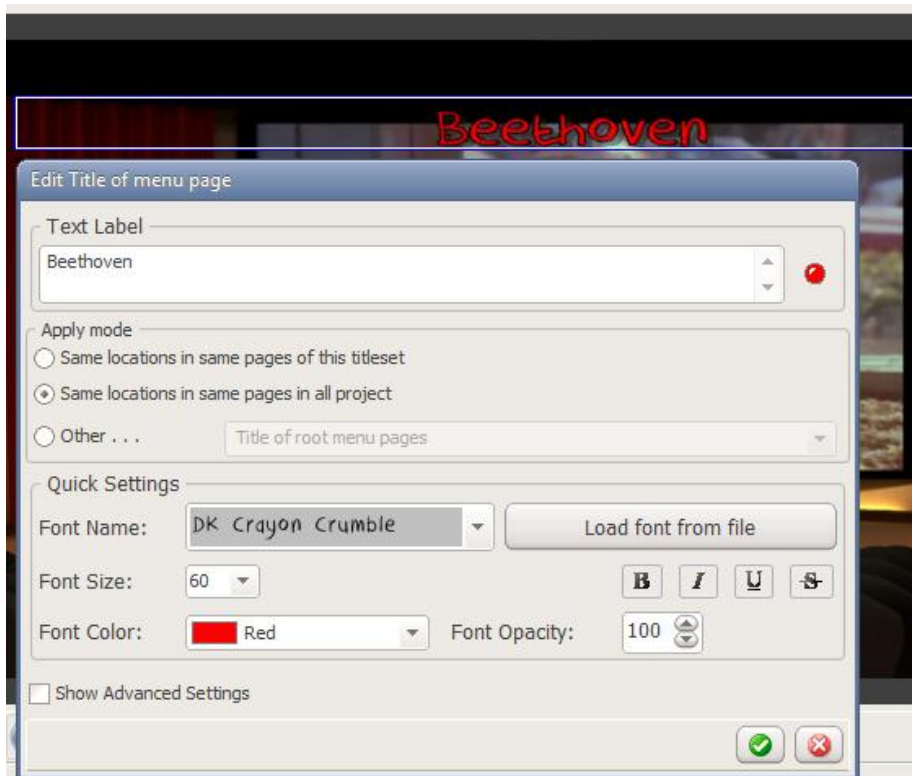
*Tip: You can also use your keyboard. Select an item and then press 'ctrl' + 'arrow keys' to move items or 'ctrl' + 'shift' + 'arrow keys'. You can move multiple similar type items together. Select using mouse as a lasso or select with mouse holding down the 'ctrl' key at the same time.

You also use the Grid for a more accurate positioning of all items:

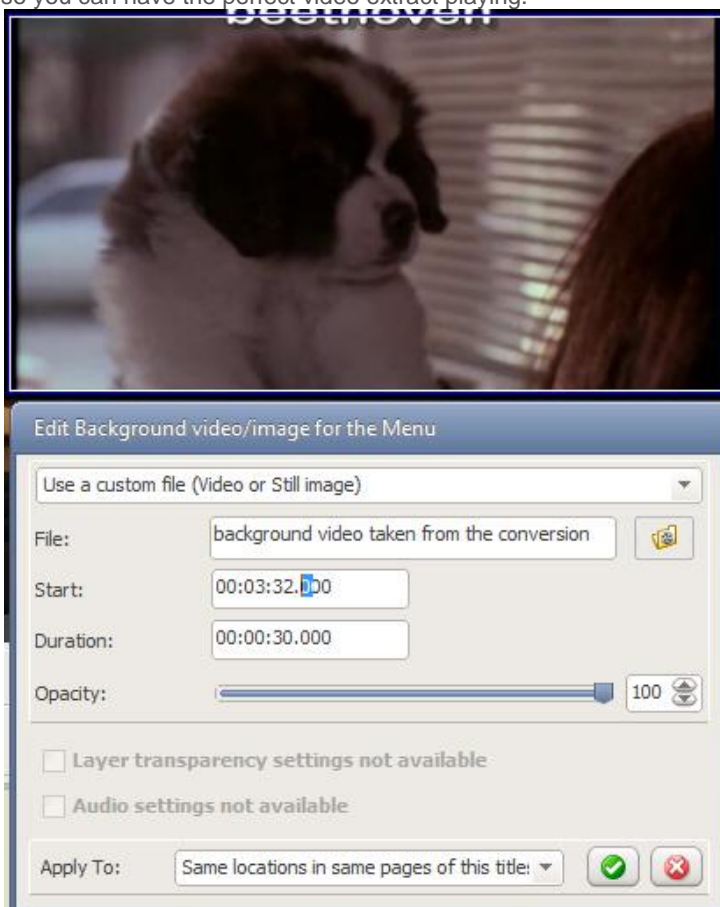


To **resize item**, click on it and use the arrows at the corners to get the desired size.

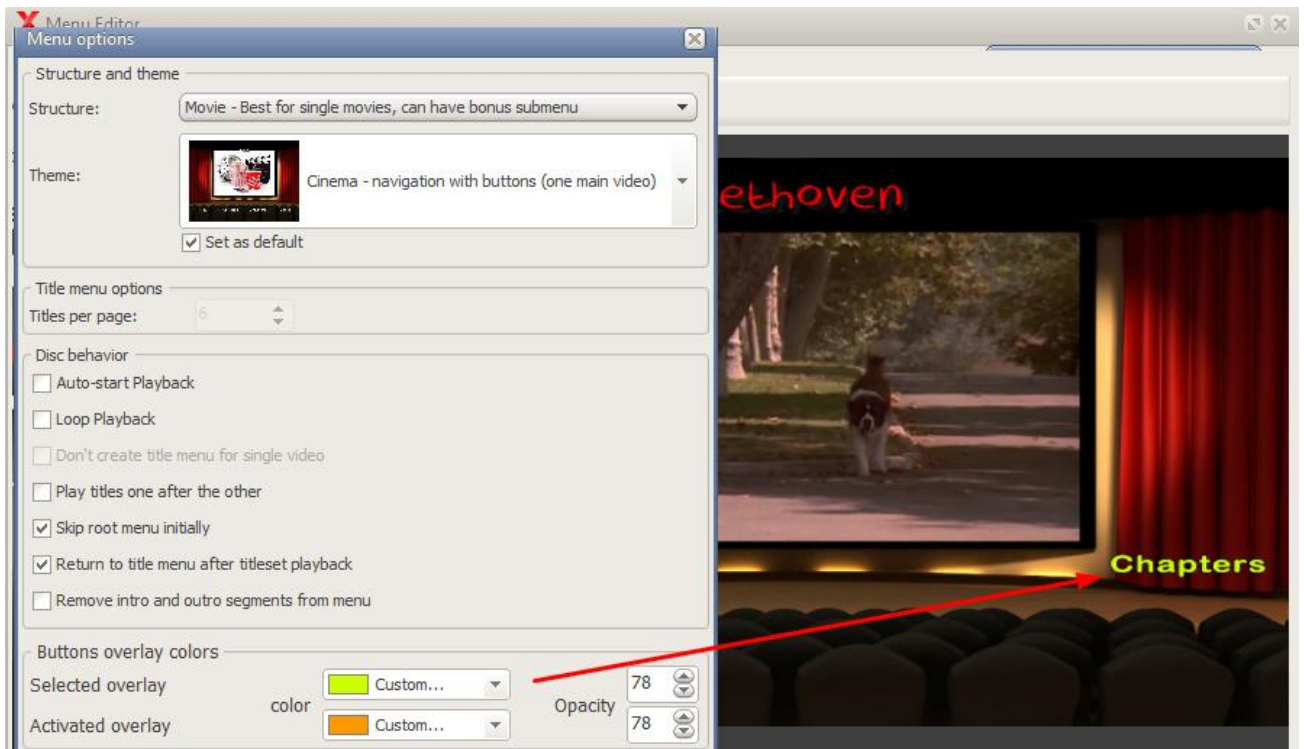
To **edit the text**, double click on it: you'll be able to change font, color, size, position, opacity, etc:



Click on the video in the background to edit it: you can change the video, its duration and even the starting time so you can have the perfect video extract playing.



You can go as far as to select the overlay color for the navigation buttons and text:



There are two main parts to the Menu editor. The left part (treeview) shows the menu pages associated with the videos files you have loaded in ConvertXtoDVD. The menu pages are dependent on your video settings whether it has subtitles, more than one audio track, chapters . . . In the top menu if you select *View | Treeview display mode*, you can change the way items are displayed in the treeview.

Click on a page in the treeview for it to display in the preview window on the right so you can edit it, like the chapter page for instance:

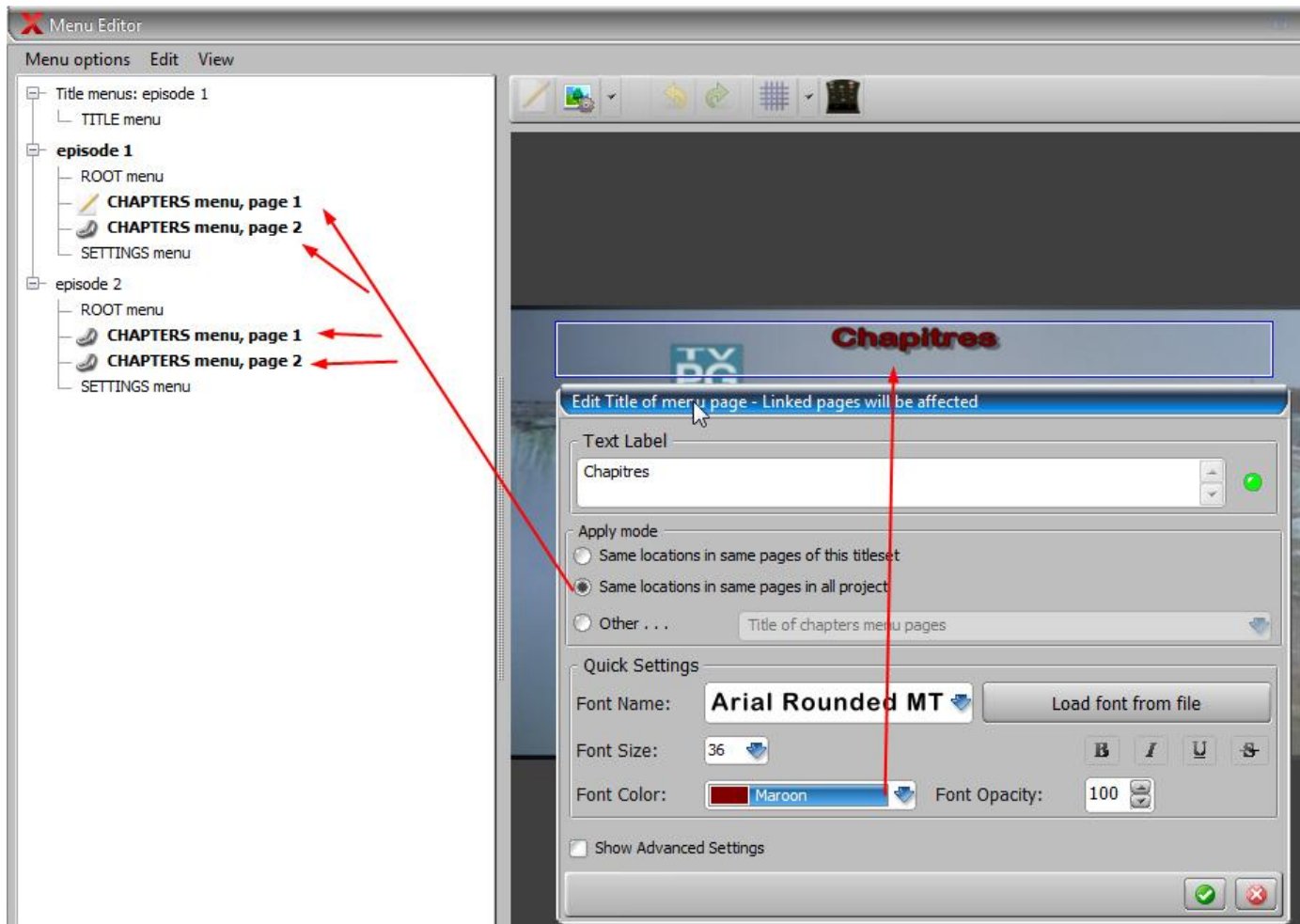
- ROOT menu
- **CHAPTERS menu, p**
- CHAPTERS menu, page 2
- CHAPTERS menu, page 3

**Edit text,
size,
position...**



The treeview will also indicate which pages will be affected by the changes made in the editing window, i.e. you can set to have the changes made to the current page or several pages in the menu (see "Apply mode" in the editing window).

In this example below see "Chapter menu, page 1" has a pencil icon - that means this is the current page being edited. The other chapter menu pages are in bold text and also have a "link" icon next to their names, that means these pages will be affected by the change as well as per the apply mode set up in this window.



You can use the **Undo/Redo** buttons at the top for more control on your editing.

For more thorough customization, we advise to use one of the Open Style templates.

Take a look at this **Before / After** comparison, first with the default settings and after the template was customized (with the Vintage theme):

Title menu, before , with default layout:



And this is after, with some editing:

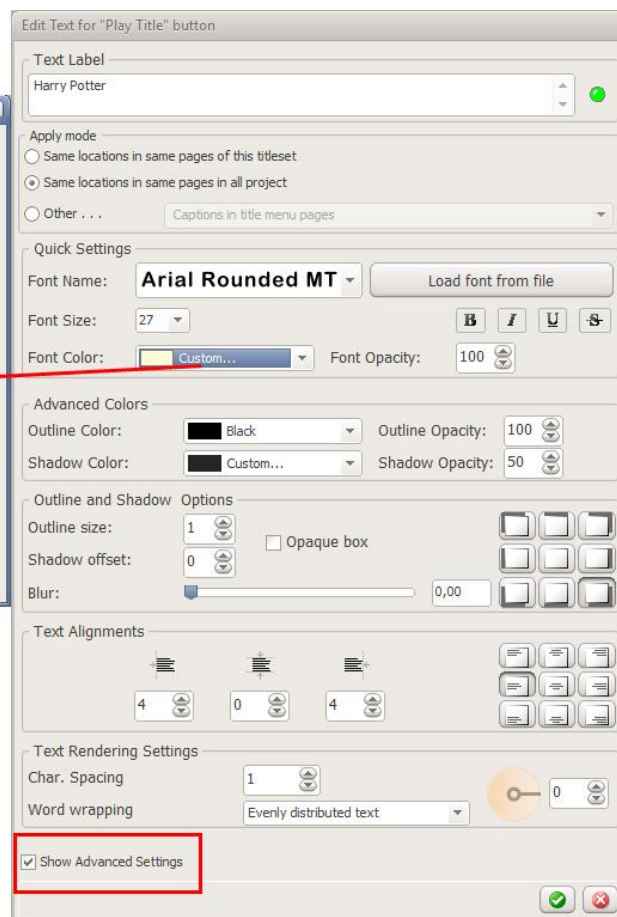
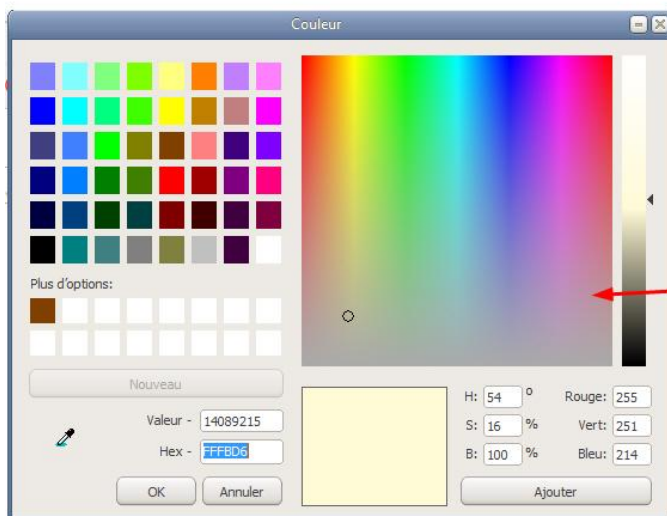


Here's what was changed:

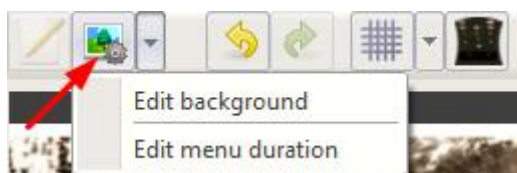


Edition Tools Summary:

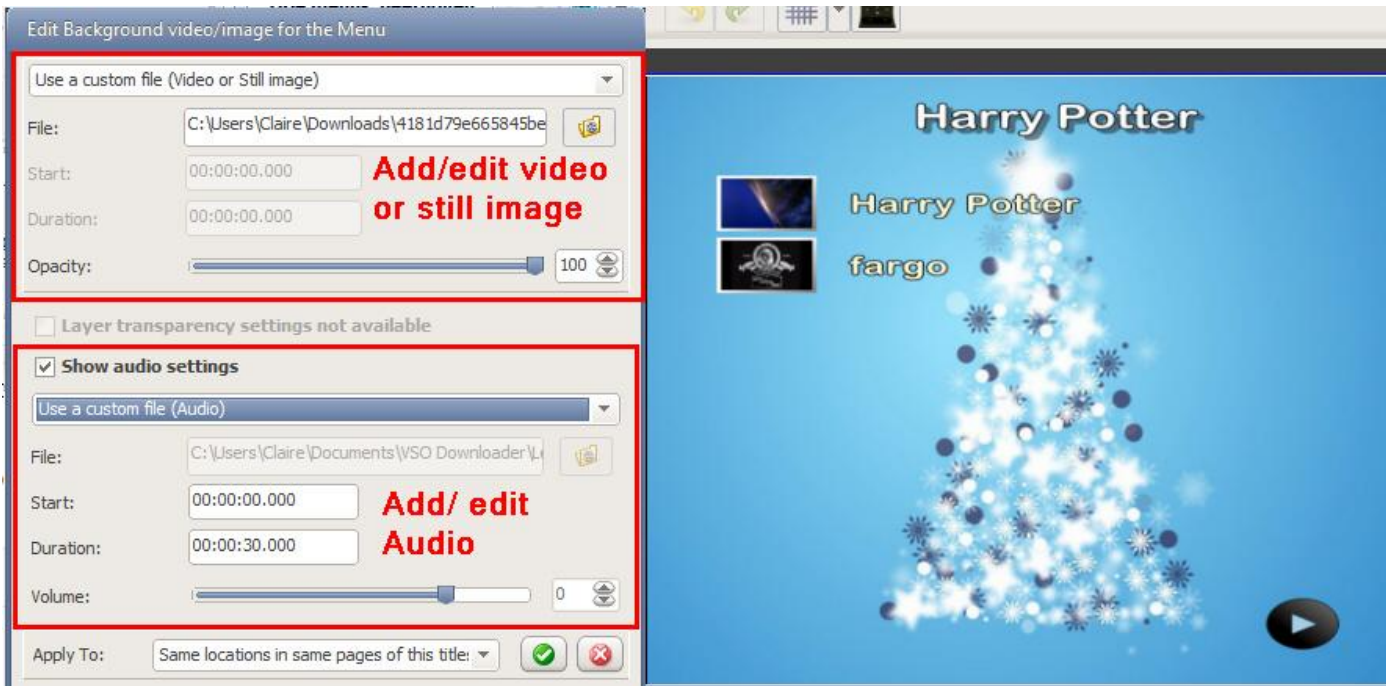
To **edit text**, double click on the text, then in the standard editing window that opens, don't hesitate to click on **Show advanced** at the bottom, to play around with the many options available, don't forget you can also add/create more custom colors by clicking on the custom line:



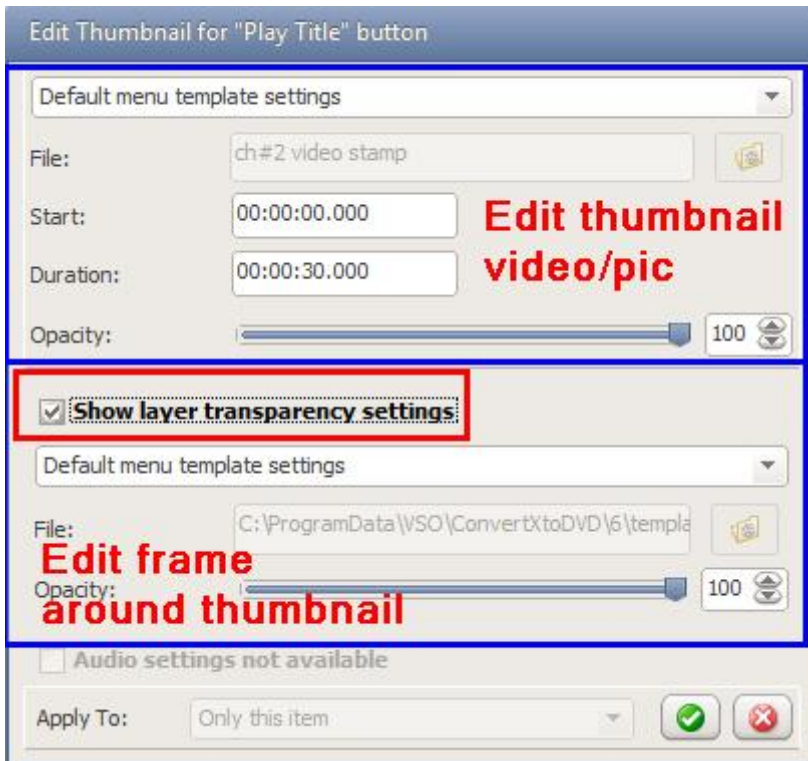
To **edit background**, double click on it or use the button at the top:



You can load another video/picture, remove the existing one altogether, edit the starting time of video and its duration, as well as its opacity. If the video has an audio, you will be asked if you want to keep it, or if you want to use another audio file, click on *Show audio settings* to load the file and/or edit its starting time, duration and volume:

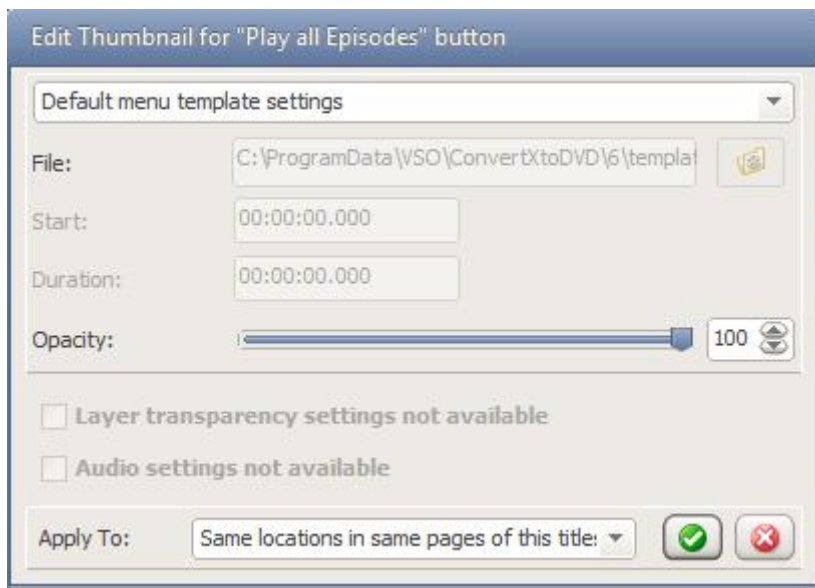


To **edit thumbnails**, double click on the item. In the upper part you can: load another video/picture to replace existing thumbnail/ remove the thumbnail altogether, edit the starting time of video and its duration, as well as its opacity:



Click on *Show layer transparency settings* to be able to edit the frame around the thumbnail: load another frame (must be in .png format) to replace existing **one/ remove it altogether, edit opacity**

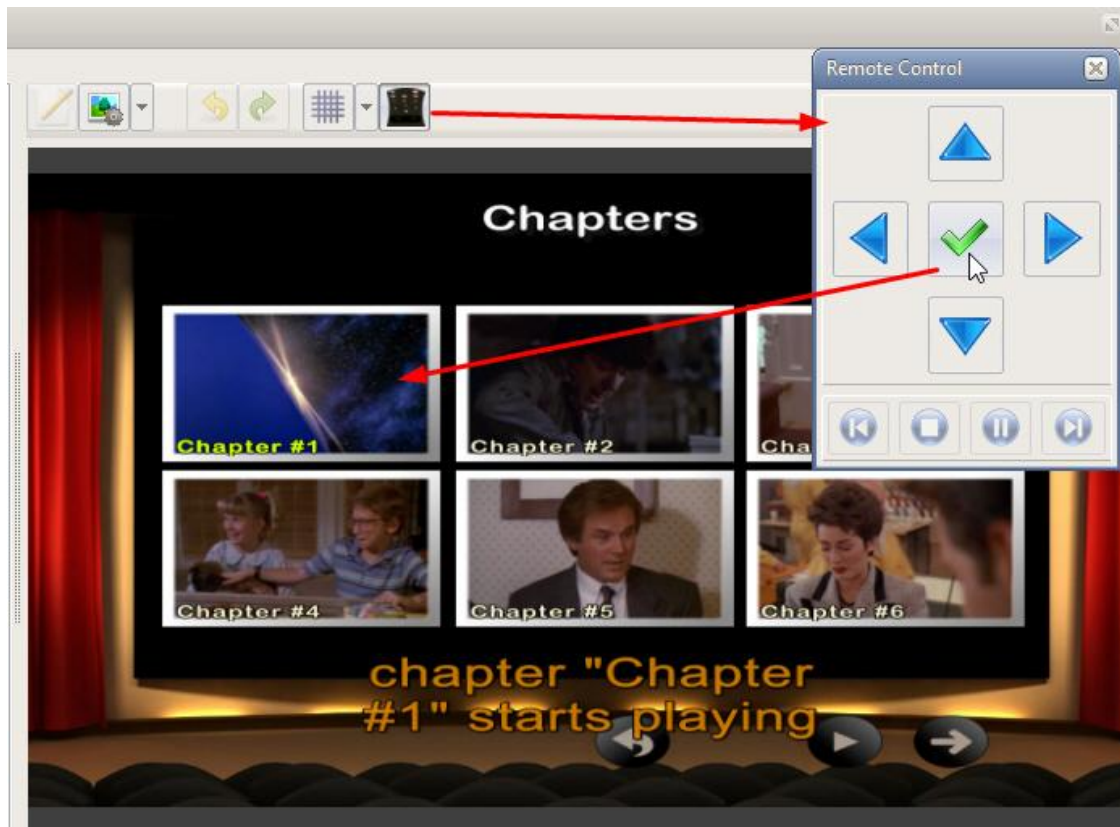
To edit buttons, double click on the item to be able to load another one. You can decide to have the same button applying to all pages in the menu, or load individual buttons on each page.



Preview your work:

At any moment you can check your customization in different ways:

- by playing the preview by clicking on the play icon under the preview window. You must use the stop icon if you want to edit menu pages, clicking on the preview window put the playing menu on pause.
- by using the remote control icon to reproduce the real behavior on the DVD player,



- by playing the different menu pages as a slideshow, by going to the top menu **View | Display all menu pages as slideshow** and you will see all menu pages displayed at the bottom of the menu editor.



You can press pause on remote and navigate as you want by clicking on the images or using the **<| icons >|** on the remote control. It can be a cpu intensive process to create and display the all the menu pages.

Other useful tools:

Intro and Outro / Menu duration/ Looping

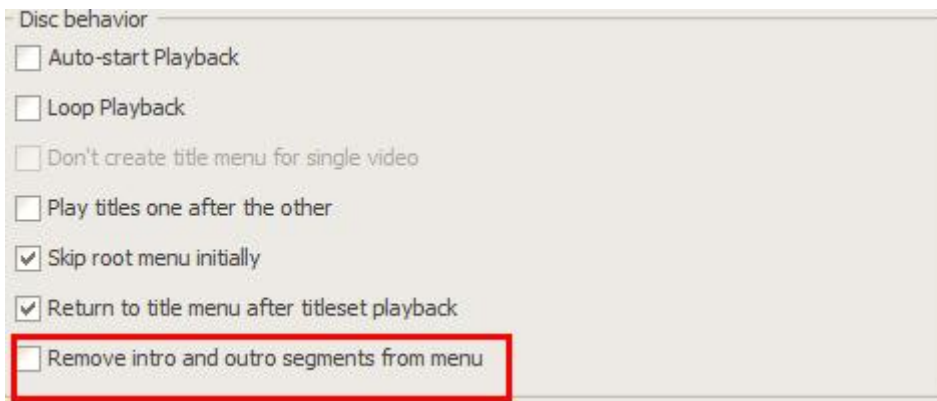
By default, the menu will be played with an intro and an outro (a fade in / fade out of the menu items). This is the "time" it takes for the menu item to be fully displayed on screen.

During these intro/outro, the items cannot be selected with the remote control, which is why some people who want quick and direct access to the menu may want to remove them.

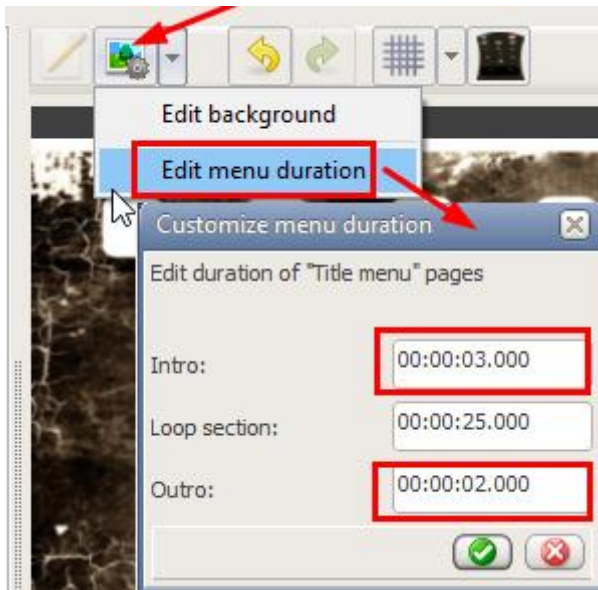
When you play the menu preview, you will notice two balloon hints marking the end of the intro and the beginning of the outro.



To remove the sections altogether, click on Menu Options and tick the box **Remove intro and outro segments from menu**:



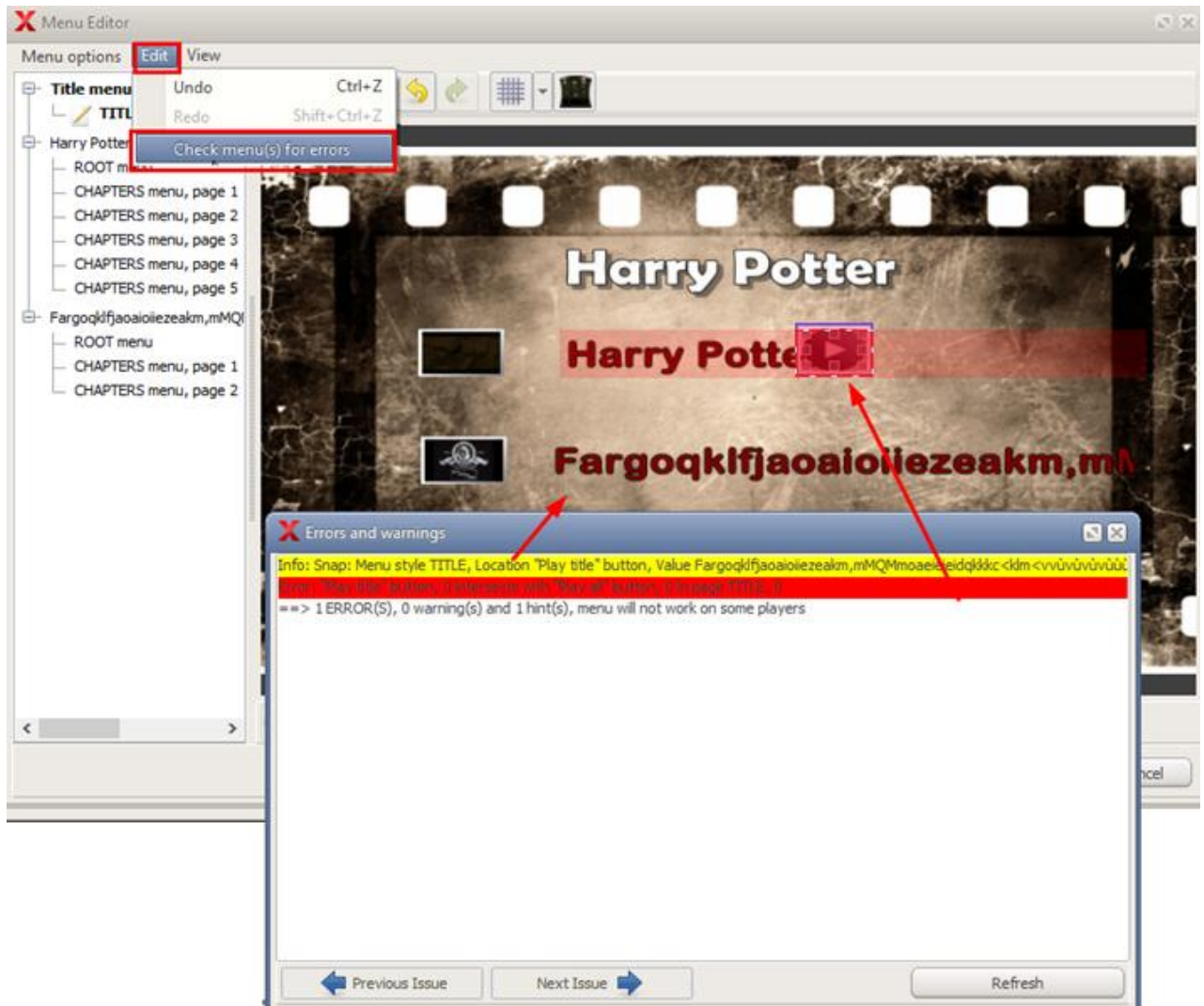
To edit the duration of these sections, click on the Edit Background icon at the top of the preview and select *Edit menu duration*.



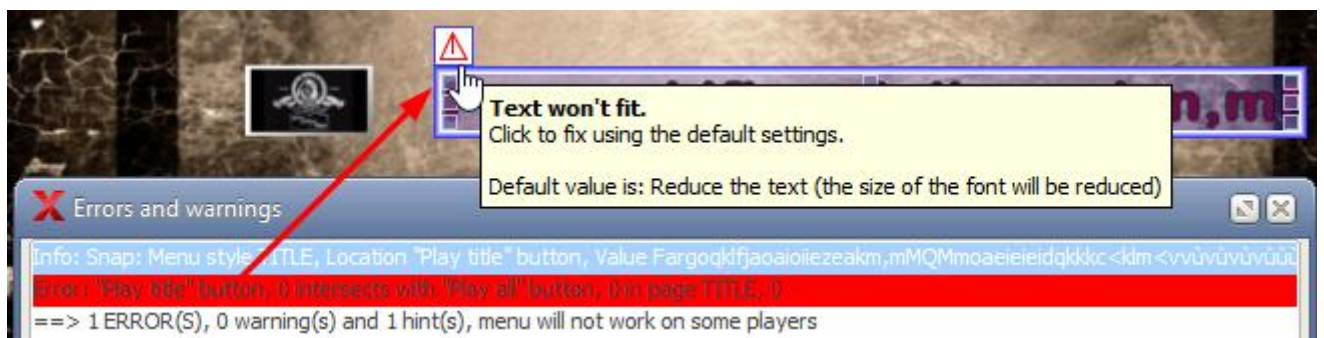
There you can also determine the overall **menu duration** and decide how long the menu should play for before it **loops**.

Error wizard

And finally, to make sure you've done a good job with your editing, you can click on *Edit / Check menu(s) for errors* and the program will tell you if it detects any issues in the menu and list them, like for instance items overlapping each other, text too long, etc:



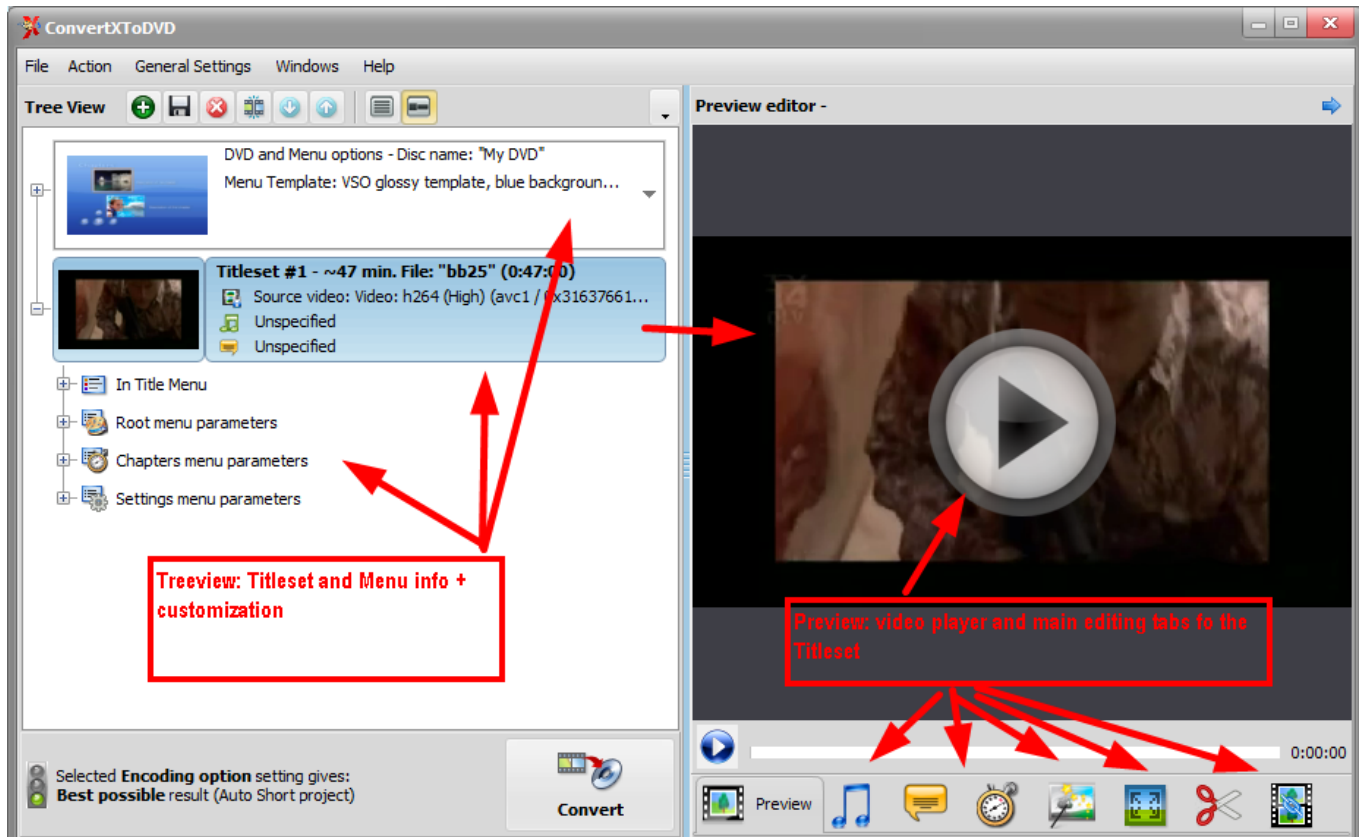
In some cases, the editor can suggest ways to resolve the issue and will display a warning sign, if you click on it, it will automatically apply the action:



Preview editor window

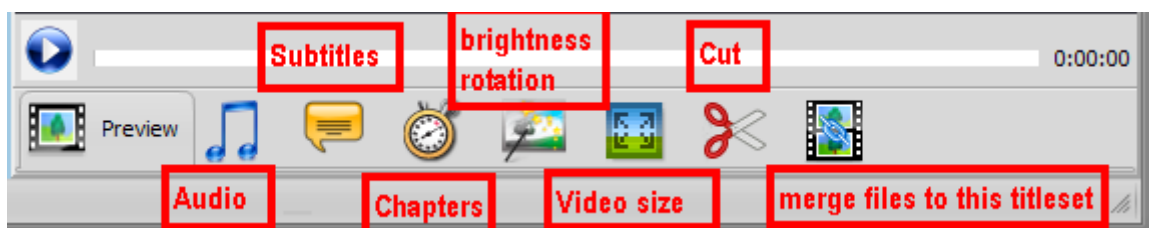
ConvertX integrates a live Preview.

Titleset listing + menu info and customization are shown in the left hand side window, called the **Treewiew**, while the video player and main editing options are shown in the right hand side **Preview** window.



The preview window has a video player in the upper part, where you can play scroll back and forth into the video, and where any changes made with the tabs below will be shown live.

The tabs offer the main video editing options: [Audio](#), [Subtitles](#), [Chapters](#), [Brightness/ contrast and rotation](#), [Video format/size](#), [Cut](#) and [Merge](#).



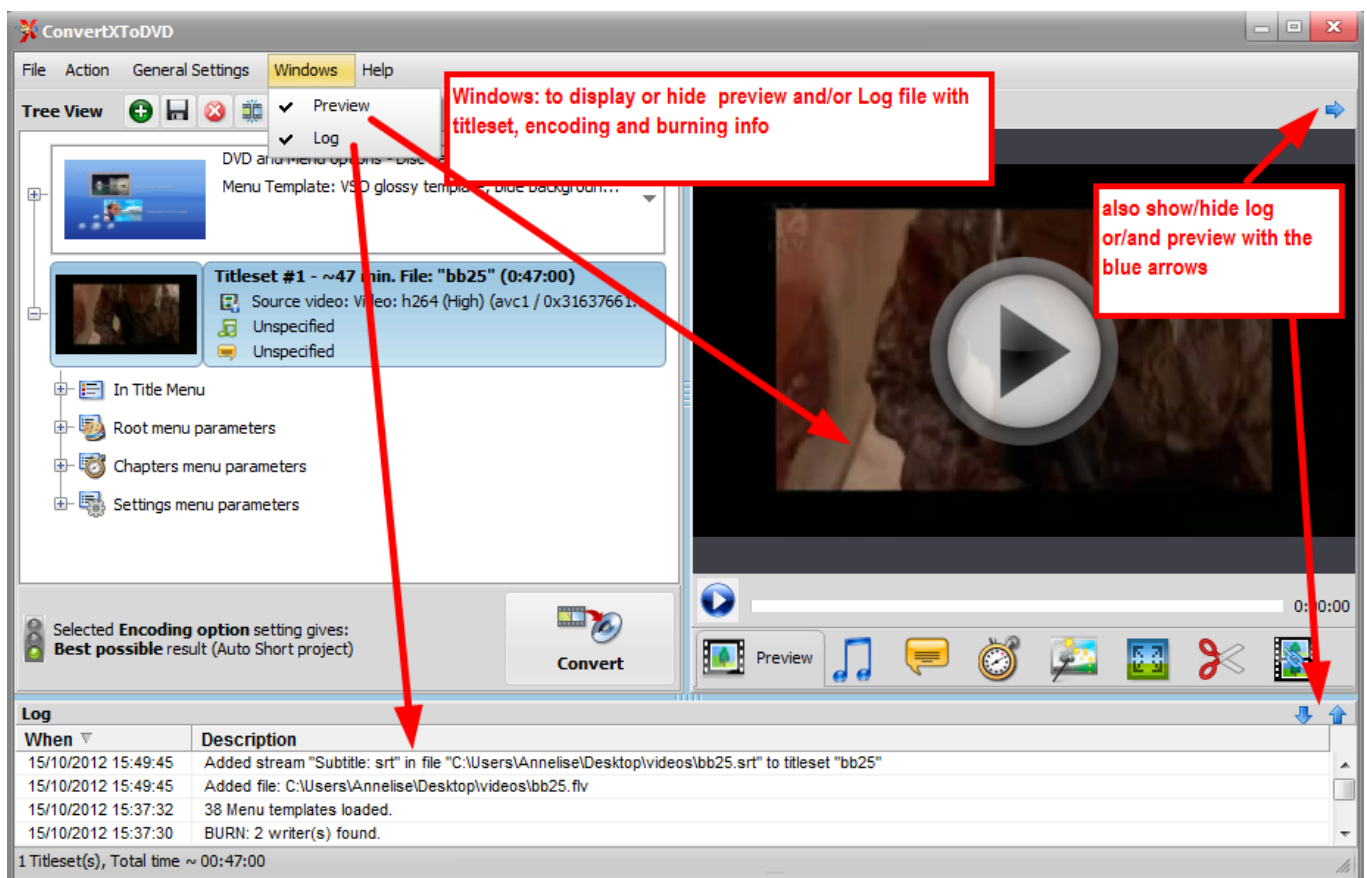
The preview screen is especially helpful for editing subtitles, adding brightness/contrast because any changes are shown live, and for the Cut option, enabling an exact selection of area(s) to remove. Please check out each section for more info.

Interface Customization

The look of the software can be customized by displaying or removing the preview on the right and log window at the bottom.

(The log file is information notes about your conversions). The most recent conversion is found at the top of the file. In case of problems, this information is first needed together with a good description of your problem. Both the description and log file information can be posted on the VSO forum. In case of a technical issue, you do not need to copy and paste the log file, it is sent to the support team automatically when using the [technical support form](#).

Note: All log files are automatically saved by the software. I.E. you do not need to do a new conversion to create and save a log file. All conversions are recorded, saved, and stored for you by the software.



You can also change the **background color** of the software: go to "General Settings" "General" and at the bottom of this window select your preferred color in "theme" (color top menu in the application, borders, and buttons).

Audio streams tab

Here you can add or remove an audio stream and apply various settings to it.



To add an audio track, click on the  icon, in the middle of the screen.

The selected audio is shown in blue and plays in the preview. To listen to another track in the list, simply click on it and it will play and be highlighted in blue. You can remove an audio track by clicking on the red circle at the left of the track.

Clicking on  will open the **edit the stream**



Audio volume filter (NEW in Version 6)

If you want to increase or decrease the volume of your file use the cursor on the slide bar. Play the file in the preview window, sometimes there can be a few second delay but you can hear the different this setting will make, so play your file to see if you like the result before converting. See the hint that displays on the cursor for some value references.

To use the audio normalizer click on the icon with the magic wand. The value used for normalization is the one in the top menu under "Default settings".

The normalize and the volume filter are two different settings. Both if changed can be heard in the preview window.

Output format

- Automatic: Converts audio to AC-3 format.

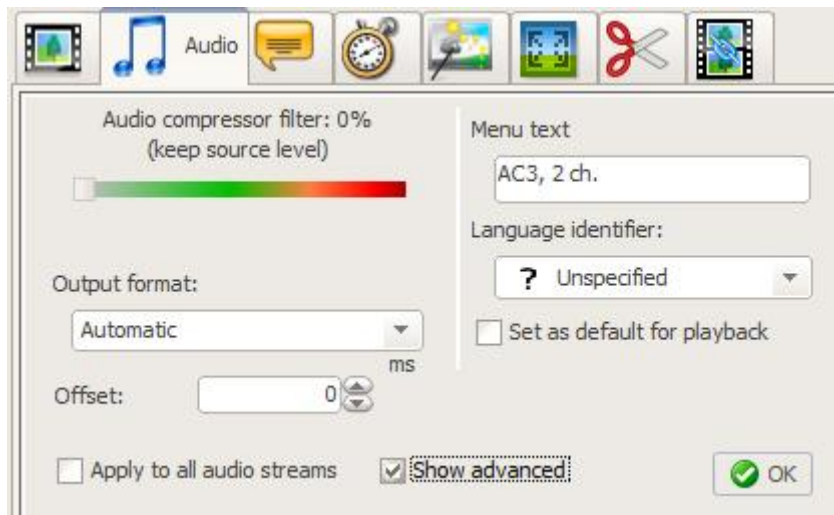
If the original audio is compatible with the output: for AC-3 format it will not be converted but copied as is or if you have unchecked "Convert DTS to AC-3" in the General settings, then the Automatic setting will not convert DTS streams to AC-3.

- AC-3, 5.1: Converts audio source stream to AC-3, 5.1 channels even if source contains less or more than 6 channels. When selected, it'll be matrixed and down/up mixed to the 6 channels.

- AC-3, 2.0: Converts audio source stream to AC-3, 2 channels. When selected, it'll be matrixed and down/up mixed to the 2 channels.

- MPEG: Converts audio source stream to MPEG format, with an output of 1 or 2 channels. If necessary it will be down mixed (for ConvertXtoDVD only)

Clicking on "show advanced" will reveal even more options:



Offset

If the audio is not synchronized with the video you can add a delay (either forward or backward). MS stands for milliseconds.


The **Menu text** is the text that will show in the menu (if you've selected one). You can edit it with your own text. The **Language identifier** is a tag the stream will be associated with. The language identifier will be a language abbreviation such as EN, FR, ES It does not appear in a menu or on the DVD but identifies the stream to a DVD player - this language identifier can be seen when you press the audio button to activate or deactivate audio on a remote control and it will display the tag of the current stream being displayed. ConvertX tries to automatically detect the language of the file but if no information is found "? Unspecified" will be displayed. If the detection is not accurate, you can change it. If it is not detected you will see "? Unspecified". Changing the Language identifier will also update the language in the menu text above. You can however customize the Menu text - edit it after having select the correct language identifier. Don't know what language is the right one? Play the video in the preview window listen to the audio and then select the corresponding language to what you just heard.

Select "**Set as default for playback**" if you have more than one audio to convert and you want this one to play by default when you play the disk.

Subtitle tab

Click on "Subtitle streams" tab to access all subtitles features. ConvertX tries to detect additional streams for a video file (like subtitles) automatically. This only works for subtitles that are named accordingly to the video files they belong to ("My Movie CD1.avi", "My Movie CD1.srt") and if they are located in the same folder/location. However, audio and/or subtitle streams can be added to a titleset manually.



To manually add a subtitle file, simply click on the icon  and load the file from the browsing windows that opens. If your subtitles file has the exact same name as the video (apart from the extension), and is stored at the same place as the video (same folder), then it will be loaded automatically by the software.

If you want to remove a subtitle stream, simply click on the icon .

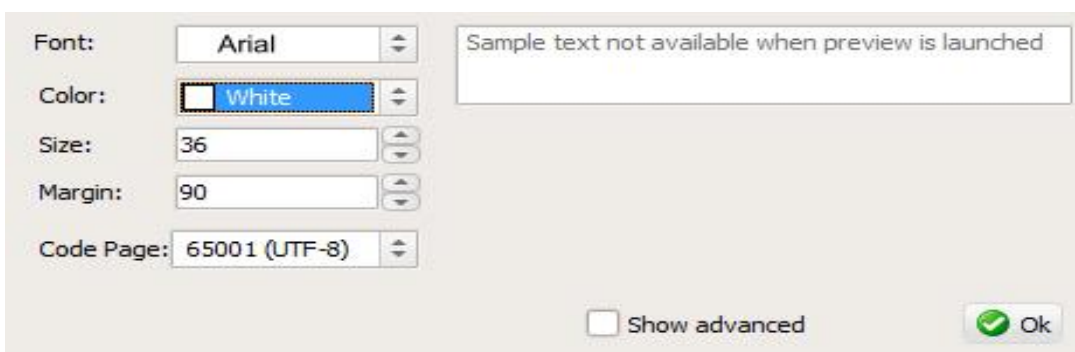
To select a file to be played in the preview, simply click on it, it will be highlighted in blue.

If you click on the ... icon on the right, you access the subtitle options. The window that appears enables standard editing of SRT files only and ASS/SSA files with one style only (other subtitle formats + ASS/SSA files with more than one style already have their styles pre-defined and cannot be edited): **font, color and size**. Any changes made here will be applied on the preview after you click on OK.

For ConvertXtoDVD only:

DVD standard and the use of soft subtitles (ones that can be turned on or off) have limitations and embedding the subtitles into the video removes these limitations and give a more professional/beautiful result. Blu-ray subtitles do not have these limitations so you can leave them as "soft subtitles". So if you want to get the cleanest, smoothest looking subtitles (or get their true color for ASS/SSA subtitles) check the option to embed the subtitles into the video. For more information read [this post](#).

If you always want to apply the same settings to your subtitles, you can set subtitle settings once and for all at General Settings -> Subtitle tab -> Subtitle text style rendering.



Font: The selected Font is the one what will be used through the whole displayed text. Arial, because this allows to display text lengths of 55 characters per line. A normal created srt subtitle file has 50 characters per line defined.

Color: Change the color you want the subtitles to display in.

Size: Changing the font / size will result in a different amount of characters what will fit in one line. The amount of characters what will fit in one line is also affected by values set at section Margin.

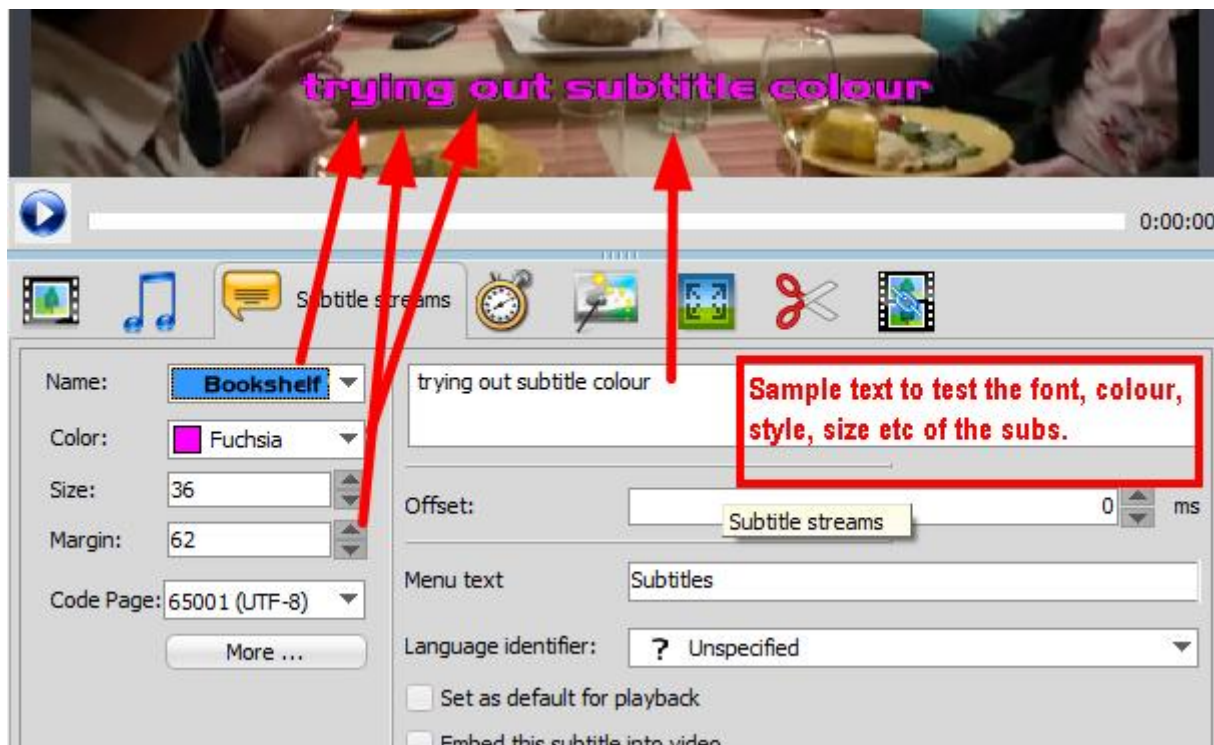
Margin: increasing the number moves your subtitles vertically higher on the screen and decreasing lowers them.

Code Page: see below for explanation

Multi-line subtitle test zone. Type your text here.: allows you to type a sample text which will not display on the converted file, but allows you to test out your subtitle settings: color, font, etc.

The **Sample text zone** is an area where you can type in any text and apply any subtitle option to preview it (incase the real subtitles don't play immediately and you don't want to "waste" time "looking" for them in the video). This option is only available before the preview is actually launched, and only with .Srt subtitle files.

For more options, click on [Show advanced](#).



More editing options are available in this window:

Margin: Defines the margin space (vertical positioning) on the screen (0 being the bottom edge of screen and 535 being the top of the screen)

Code Page: Also if your subtitles are in Greek or Thai or in some other character formatting that does not use ANSI-latin 1, make sure to change the code page so that your subtitles are displayed correctly on the converted result.

Offset: If your subs are not synchronized with the video or audio you can add a delay (either forward or backward). MS stands for milliseconds. The offset feature is available for all subtitles styles.

Menu text: the text that will be shown in the "settings" menu of the disc to identify the subtitle stream.

Language identifier: is a tag the stream will be associated with. The language identifier will be a language abbreviation such as EN, FR, ES It does not appear in a menu or on the disc but identifies the stream to a DVD/Blu-ray player - this language identifier can be seen when you press the subtitle button to activate or deactivate subtitle on a remote control and it will display the tag of the current stream being displayed. ConvertX tries to automatically detect the language of the file but if no information is found "? Unspecified" will be displayed. If the detection is not accurate, you can change it. If it is not detected you will see "? Unspecified".

Changing the Language identifier will also update the language in the menu text above. You can however

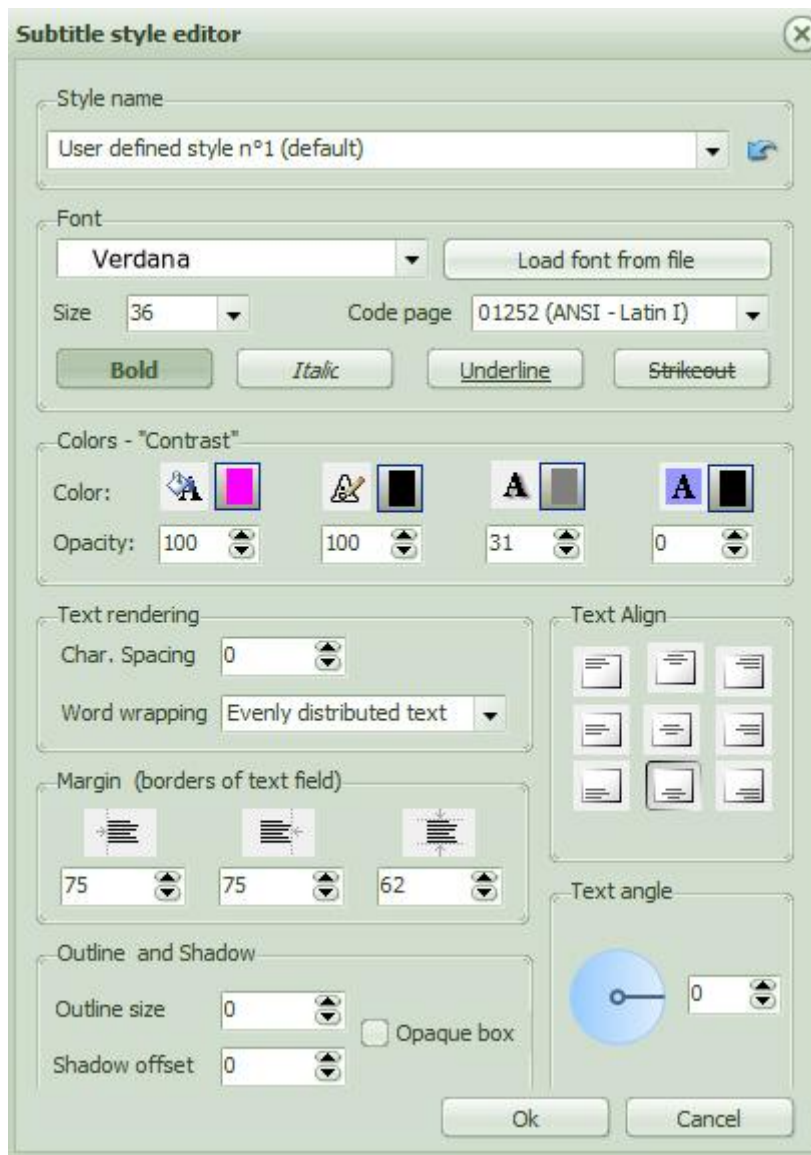
customize the Menu text - edit it after having select the correct language identifier. Don't know what language is the right one? Play the video in the preview window read the subtitles and then select the corresponding language to what you just saw.

Click on **Set as default for playback** if you have more than one subtitle stream and wish this stream to be played by default when the disc is inserted into a player and played.

Embed this subtitle into video: will "stick"/hard code the subtitles directly into the video. They will not be "removable" and they will not appear in the subtitle menu. Of course this is done on the converted result not your original video file.

More...

This button opens up the Subtitle Style Editor, proposing advanced subtitle editing possibilities.



Style Name

You can customize your subtitles just for this video (in that case apply your changes then click OK at the bottom). In the style editor, under style name, you will find all the pre-set settings for your subs, either the default one from the software or any styles you may have added yourself. To create a new style or change the default style so that your conversion will always use these subtitle settings, you need to open the subtitles style editor from "settings" and "subtitles" and follow these instructions.

We've just seen how to edit **Font, Size**, here you also have the possibility to show your subtitles in **Bold, Italic, Underlined** or ~~Strikeout~~. Note that your selection will apply to the whole subtitle file, and not just on certain lines of your choice.

In this section you can also change the **Code Page**. For more information on what Code page is please see http://en.wikipedia.org/wiki/Code_page. The default code page (ANSI Latin 1) is the character set for Western European spoken languages. If you are not sure what Code Page to use please consult [this page](#) which identifies different code pages.
Use "Load front from file" to load an external font.

Colors -" Contrasts"

Define the color of the text, outline (emphasis 1), shadow (emphasis 2) and the background for your subtitles. In the boxes beneath each of these you can modify the transparency of the color applied (0-100: 0 = transparent, 100 = opaque).

Text Rendering

Character spacing: define character and line spacing, and maximum number of characters to be displayed per line.

Word wrapping: defines if and how text should be wrapped: Evenly distributed text, Top line wider, End of line, No word wrapping, or Bottom line wider.

Text Align: choose the position of the subtitle in the screen: bottom, top, right hand corner, etc, according to the symbols.

Margin: Define left, right, and top/bottom margin on screen (0 being the edge of screen and 535 being the top of the screen)

Outline and shadow: the **Outline size** defines the thickness of the outline desired.

The **Shadow offset** lets you define the space between the characters (black) and the shadow (blue), use up / down arrows to change value. Watch text on screen what happens.



Opaque box: Check Opaque box and a box (somewhat transparent) will be placed around your text. Some prefer this for better readability.

Text Angle: this new option enables you to tilt the subtitles at any angle.

Click on OK to save your preferences.

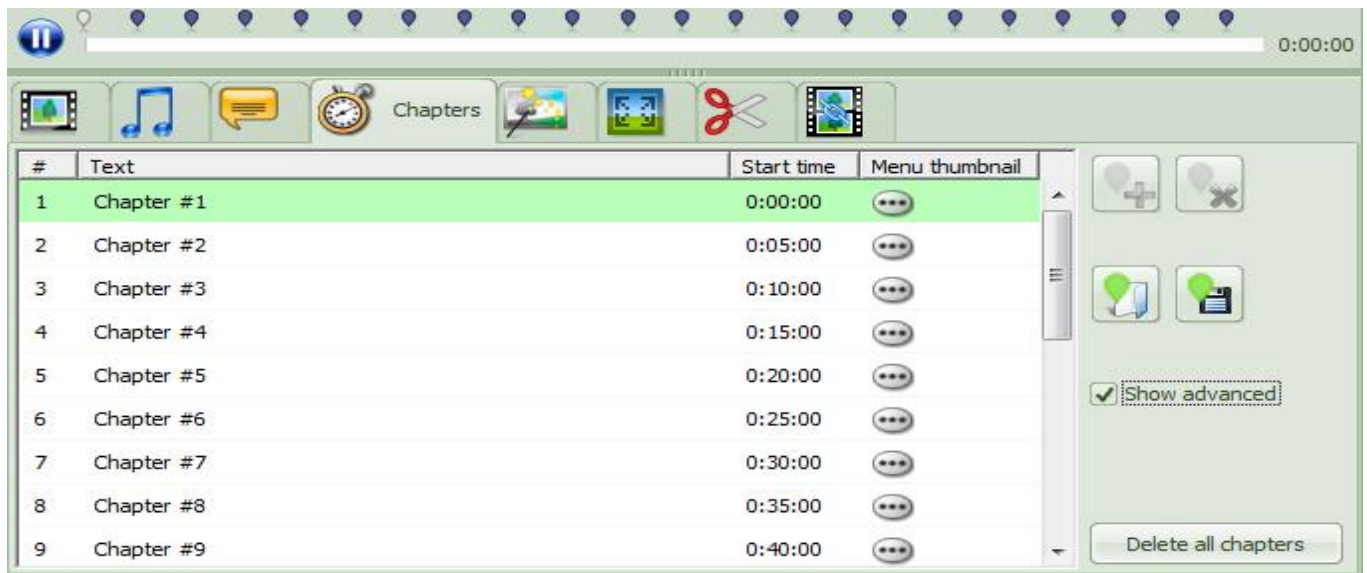
Chapters tab

A chapter is an invisible mark in the video that helps you navigate through the film as you are watching it. Instead of fast-forwarding to a specific point you can jump at intervals, these intervals are chapter points that you can determine here. Note: For ConvertXtoDVD, a maximum of 99 chapters points can be created. This is not a limitation set by the software but by DVD standard.

Here you can set/edit/delete the chapters on your video.

By default, if your file doesn't come with chapters, the program adds them every 5 mins for files over 15 minutes in duration (see the [General Settings](#) to change these values). A chapter point will always be created at start of file. You cannot delete this first one!!

If your original file does come with chapters then the software will import them. Do note that if you go into the *General settings*, if you change or not a setting and when you leave the *General settings* select "yes" for "Do you want to apply the new settings to the current project?" then the chapters as defined in the *General settings* will be applied to our project replacing the original chapters.



Chapters are listed in the window and are indicated on the timeline with "balloon" hints to be clearly identified.

You can edit those chapters in 3 ways:

- moving the balloon hints with your mouse along the timeline
- manually entering a new start time in the main window
- chapters can be added/removed by clicking on the + or x icons.

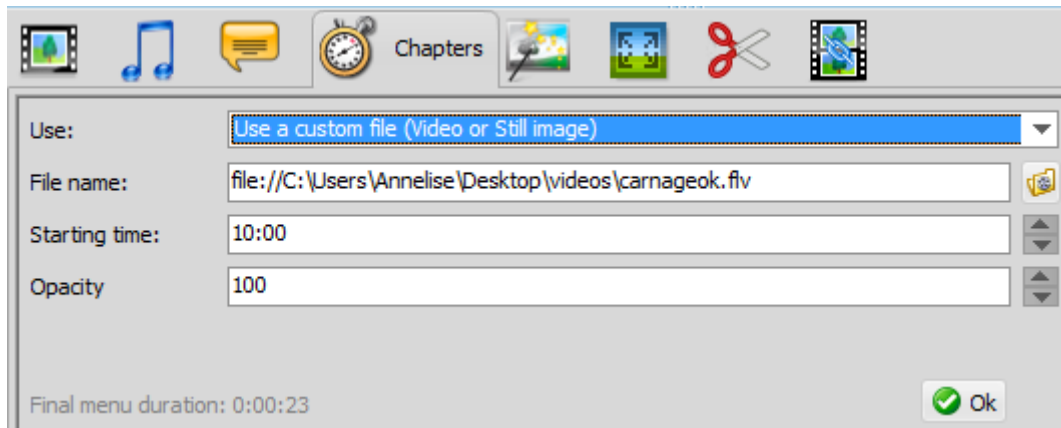
by clicking on "**Advanced**", two new options appear:

- **Load a file** with Chapters already set on a text file with the .chpt extension.
- **Save the** chapters added to the file.

Clicking on the "**Delete all chapters**" button simply removes all chapters from the file.

The **Menu Thumbnail** feature lets you choose a thumbnail that will be shown in front of each chapters in the DVD menu, if the menu selected enables chapter selection. Be aware that some menu templates do not show the chapters selection and no thumbnail editing will be possible, in this case the option will be greyed out.

Click on the  icon to customize the thumbnail, this window will open:



By default, the thumbnail is a video is taken from the conversion, right at the chapter beginning point. You can also select a video or picture of your own by selecting "**Use** a custom file (video or still image): the browser will open and you will have to select the video or image from your files.

Below you will find further options you can edit:

- the **Starting time** of the thumbnail, so you can indicate the exact timing of the beginning of the extract that will be played inside the thumbnail, meaning if you want the video to start from another point in the titleset, and not from the chapter beginning

- The **Opacity** is the transparency filter that will be applied to the thumbnail image, if you want to see the video/image as it is, leave the default setting to a 100. If you'd rather have less opacity and have the image shown with more contrast, then you can edit the transparency value here: on a scale of 0 to 100, 0 being totally transparent (you won't see your image) and 100 being the brightest. The transparency is noticeable when using the Glossy templates.

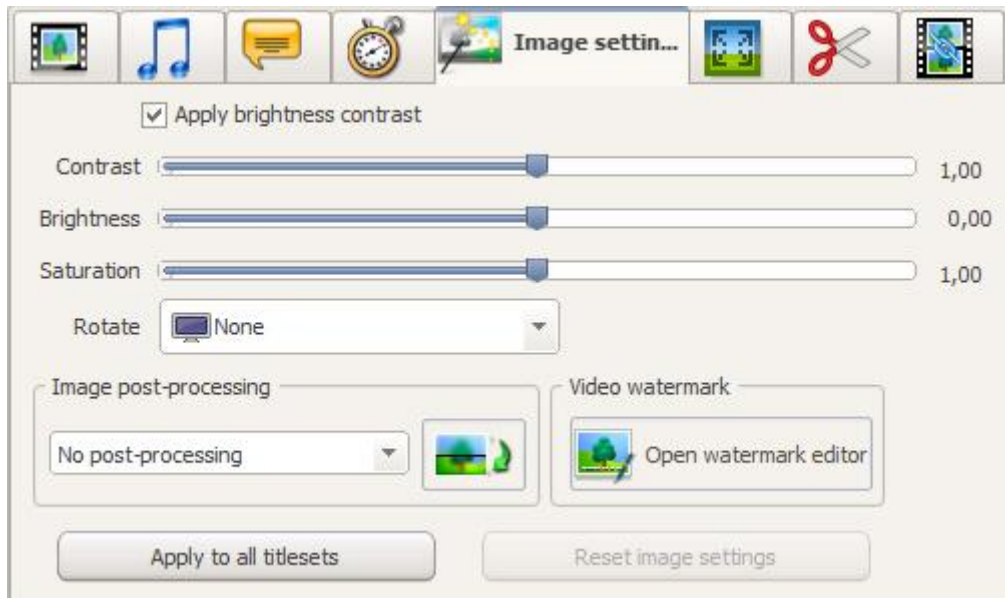
The **Duration** of the video that will play in the thumbnail, is determined by the duration of the actual Chapter menu (see menu guide for more info). Of course if you have selected a still image, no need to indicate anything as only the image will be shown)

When you're done with your selection, click on the green OK icon to save your changes and close the window.

Image Settings Tab

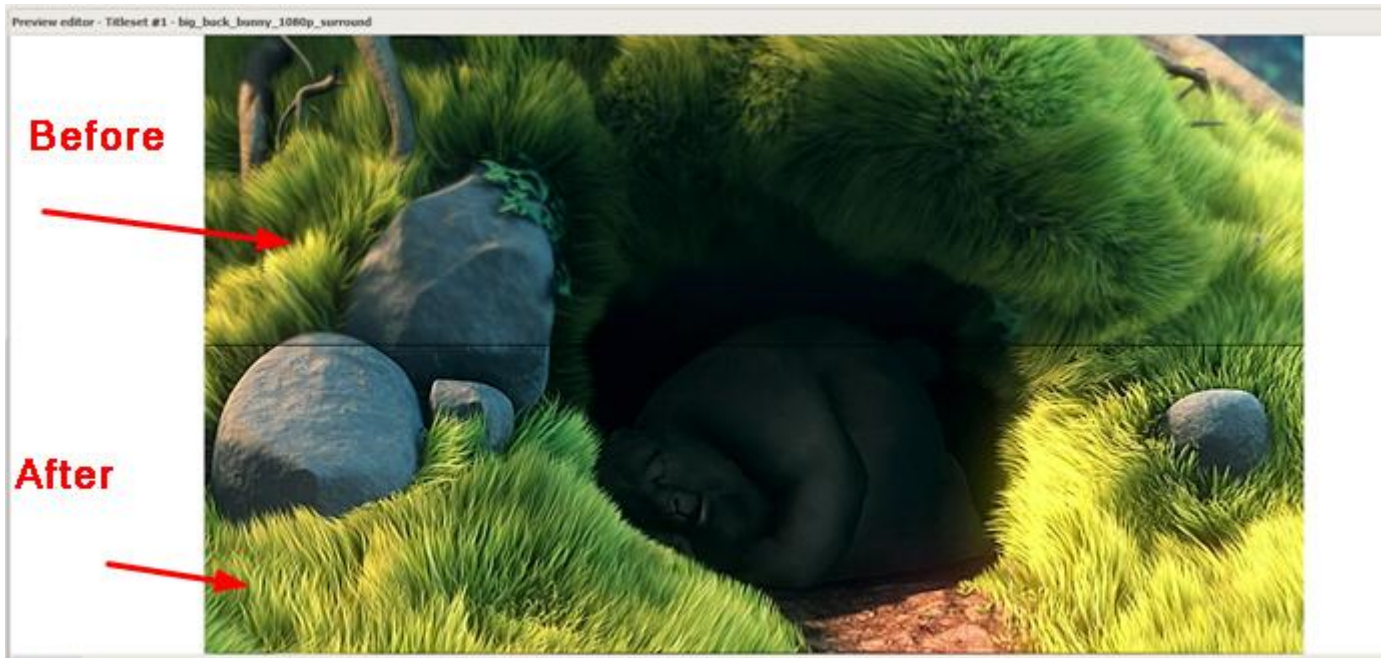
Here you can adjust the **brightness and contrast** and, **improve the quality** of your video. The changes you apply by moving the slider shows live on the preview above if "**Apply brightness contrast**" is ticked. If you want to see a before and after comparison, check and uncheck "**Apply brightness contrast**"

Adjust each of the Contrast, Brightness and saturation sliders until you reach the desired result.



The other option available is the ability to **rotate** the picture by in the "rotate" part. See live in the above preview how the picture rotates to 90°, clockwise and anti clockwise or is flipped upside down.

Image post processing: this new feature of version 6 introduces our in-house developed, brand new filters. Your eyes will thank you if your videos already have a good picture quality, as it will be improved even more. And what's more, you can check the result right away with the demo mode: select one of the new image filters in the drop down menu, then click on "demo mode" and look at the screen: it will be cut in the middle horizontally: at the top is the original video, at the bottom how the filter will act on it. Check out the difference: amazing, right?



Video watermark

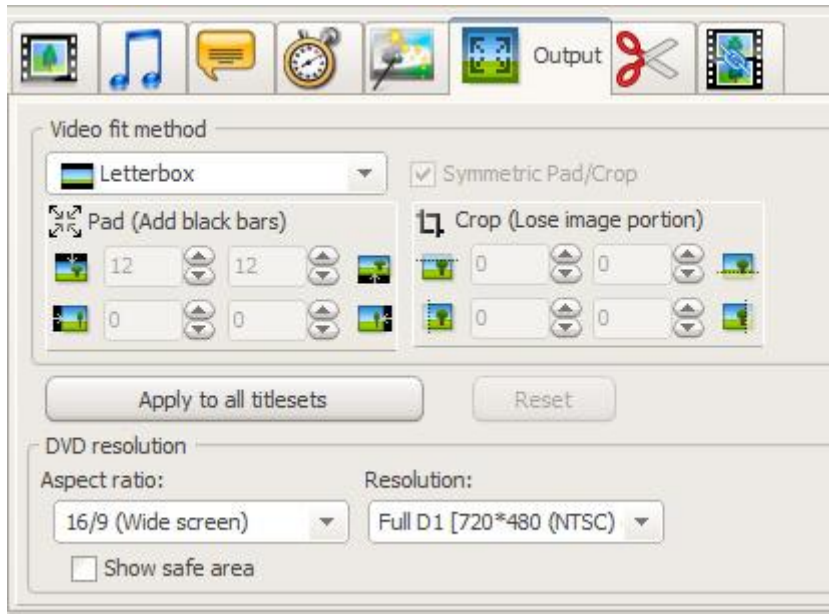
Click on **Watermark Editor** to access the new feature (version 6). You can now add your own watermark to the video (super useful for copyright purposes or if you do not want for your content to be stolen or misused). The watermark option is in the Image Settings tab. Click on Open video watermark editor and discover the great tool we've come up with: add your own text or a picture, decide where you want to place it, how it will be displayed (color, font, size, opacity,static/scroll/fall, etc.)



By clicking on "reset", any changes will be cancelled and the settings will be back to what they were before editing.

Output tab

Here you can apply different settings related to TV screen and video format. Any changes applied are shown live in the image preview.



Video fit method: offers different ways the videos will be resized.

Automatic: a compromise of both cropping and padding is applied to keep the original videos Aspect Ratio. The best settings will be used to resemble as much as possible the original video.

Stretch: video is resized the video to fill the screen, this might change the aspect ratio (image appears distorted).

Letterbox: video is resized to fit the TV aspect. No image data is lost (cropped), black bars are applied to maintain aspect ratio. This is the default setting in ConvertX.

Pan Scan: video is cropped (image data might be lost)

User defined: if selected will display fields where padding and cropping values can be entered. Select the "Symmetric Pad/crop for an even result with. See your modifications in apply to the video in the preview window.

Pad and **Crop** values correspond with the *Video fit method* setting selected in regards to the video currently loaded in the preview window.

Apply to all titlesets: will apply the changes made here to all the other video files loaded in ConvertX.

Click on the **Reset** button to go back to the default settings.

For ConvertXtoDVD only:

DVD Resolution

Aspect ratio: choose the 4/3 or 16/9 format, depending on your TV format.

Resolution:

The DVD Resolution is the quality of the image. The different resolutions available (FullD1, Broadcast D1, Half D1, SIF or Automatic.: they are ranked according to quality, Full D1 being the best one). The higher the quality, the more "heavier" your project will be, the more space it will take on your DVD. We recommend leaving this setting on "Automatic" to let ConvertX decide the resolution based on the source file.

Default is Full D1 resolution; you may however change this to a lower resolution to fit more videos onto one disc (will reduce image quality).

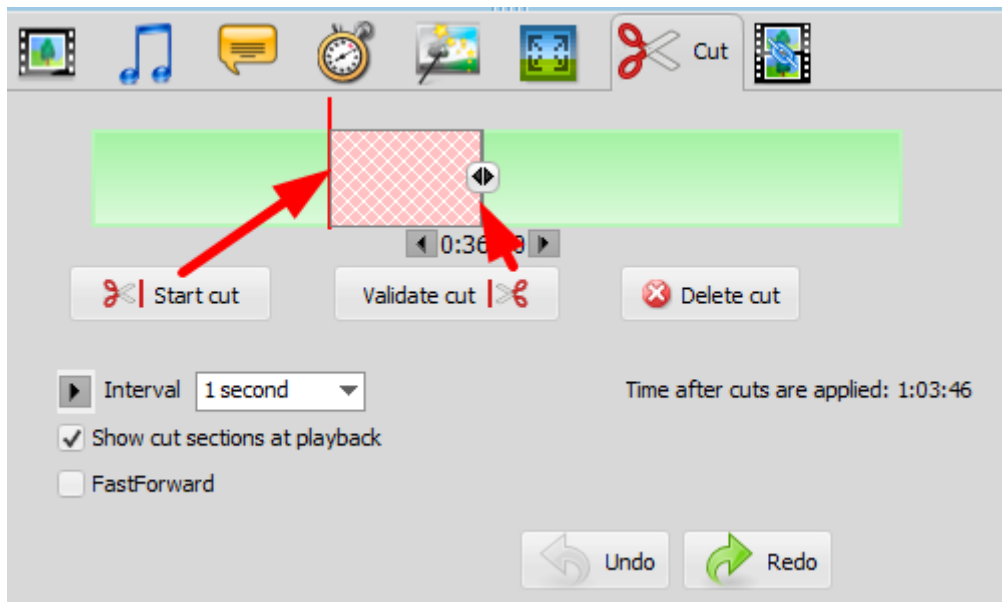
Selecting Half D1 can be interesting for files originally coming from VHS cassettes.

Show safe area if checked will display white lines near the outside of the video in the image preview. What is in brown, on the outer side of the white lines, is the part of the image that may not be shown on some TVs. This can be the overscan portion. It is recommended to not resize the video to the inner rectangular zone, since the video will be padded with extra black borders and might be visible on TV.

Cut Tab: How to remove unwanted parts of your video

In the **Cut** section you can cut off any video segment(s) of your choice. Get rid off advertisements, un-needed parts, etc. and customize your video to your exact needs by keeping only what you want.

In no way can you remove a portion from your original file. What you are doing here is defining the portions you do not want ConvertX to convert when it creates your new file. So feel free to play around and get used to the items here. Your original file will not be affected in anyway and to make things easier you have **Undo** and **Redo** buttons in this window.



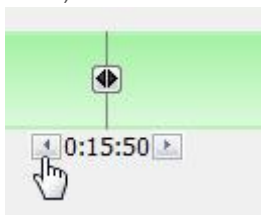
Cutting off part of the video is a straightforward process.

First you need to identify the segment to remove: play the preview and click on the scissors when you identify the area boundaries. It can be useful to play the preview and check the option "**Fast forward**" and then press pause when you get to the segment and seek around this area after having unchecked "**Fast forward**".

Use the Scissors icon to indicate the beginning ("left scissors"), then the end of the section (click on "right scissors").

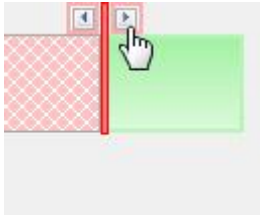
To make sure your selection is as accurate as possible we suggest using the **Interval** selector. This interval selector controls two separate items:

1) The grey cursor (which has arrows that appears below it). Clicking on these arrow allows you to jump forward or backward in the video at the interval determined in the drop-down menu (1 minute, 1 second, or even 1 frame).



2) Once a cut zone has been made and appears red, you can click on it to activate the zone to edit it some more. When a cut zone is active you have two red vertical lines that define the beginning and end of the cut zone. On top of these red lines arrows will appear. Clicking on these arrow allows you to jump forward or backward in the video at the interval determined (1 minute, 1 second, or even 1 frame) making your cut zone bigger or smaller.

As you click you will see the scenes changing in the preview window.
For the most accurate result we suggest you chose the "frame" interval. See live in the above preview the cut selection.



Tip: The grey cursor as well as the two red vertical lines (that appear when a cut zone is active) can be slided by selecting it with the mouse and dragging them.

Note: What may be awkward is that as soon as you start clicking on these red arrows the grey cursor will align itself with the red vertical line. It does this because the grey cursor identifies your position and displays the corresponding scene in the preview window. If you are moving the red vertical line, just ignore the grey cursor and continue using the arrows above the red line or sliding it.

Once you're happy with your selection, click on **Validate Cut**.

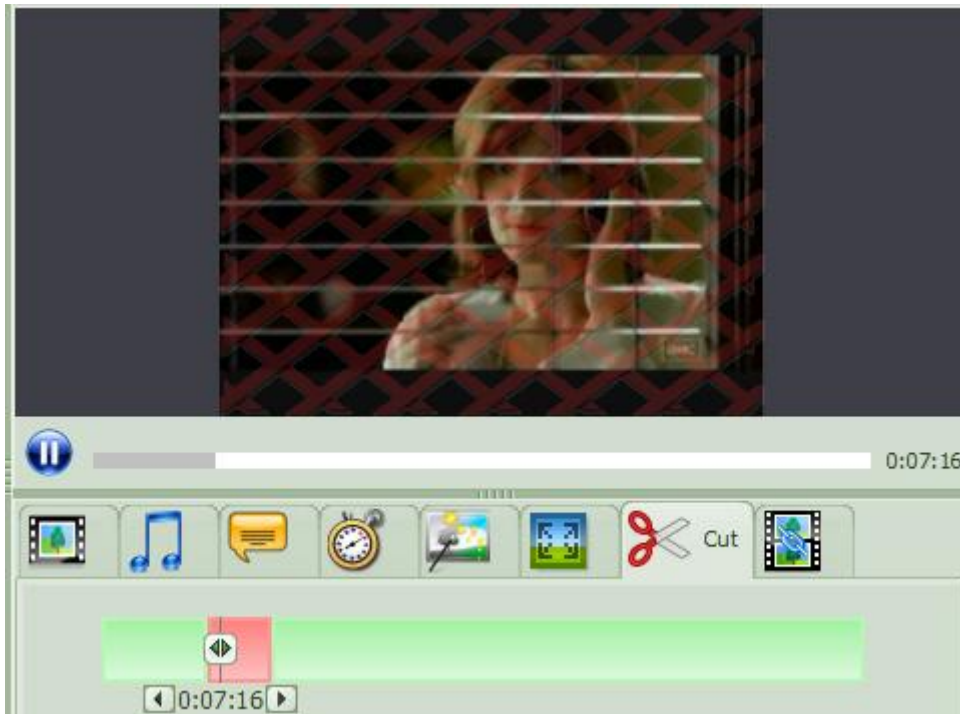
If you want to edit your selection, click on it, the boundaries become editable again.

You can delete the cut by clicking on it and pressing **Delete cut** or click on **Undo** if you want to go back one step or **Redo** to go forward one step. Deleting the cut will simply make that portion of the video green again and it will be included in your conversion.

Click on **FastForward** and the preview will play in faster speed. This can be a useful too for finding the sections you want to remove/cut.

The video duration after the cuts are applied, is indicated and is updated every time you edit the portions cut.

Show cut section at playback if checked will display and play the cut sections you have created in the preview window. The cut sections will display and play in the preview window with red X's drawn through the video to signify what part of the video will be removed/cut. The final result will not have these sections or the video with the red X's, they will be omitted from the conversion. If you uncheck this option, the cut selected will not play in the preview and you will have a preview of the final result.



Tips:

- By right clicking on the cursor in the video segment (green bar) you have access to some actions, like "Start a cut at current cursor position". If some items are greyed out, click on an already made cut zone and notice these items will no longer be greyed out.
- You may prefer to find all your start and end positions with the grey cursor, using the **Interval** selector and arrows to precisely nudge forward or backward in the video and use the options in the right click to set start and end positions.

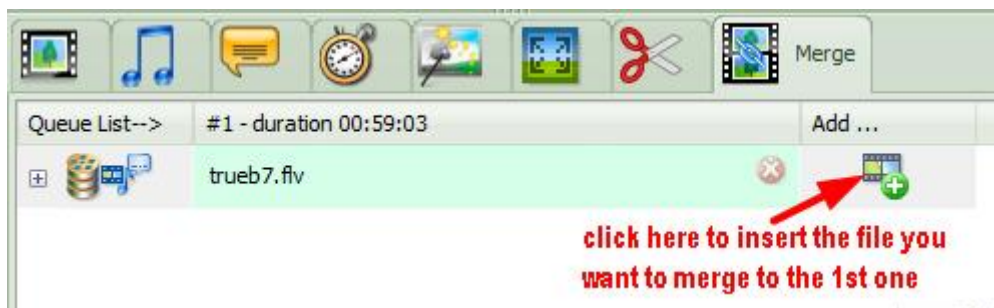
Merge tab

With ConvertX you can join several files together so they will play seamlessly as one titleset. This is useful with very small camcorders files that are better watched linked to each other, or video episodes, etc.

Start by inserting your first file "normally" into the main treeview window. Then go to the **Merge** Tab (shown in screenshot below).

The file you just inserted is showing as the first file. Any files you add will be "stuck" to that one on the right (as in a timeline going from left beginning to end-right).

Simply insert the file by clicking on the + symbol, as below:



If you have multiple files to join to one another, you can select them all with Ctrl +A and they will be inserted automatically one after the other .

You can organize the files in the order of your choice, simply click on the gray "header" of the file (#1, #2...) and drag it to the desired position. (for instance if you want to move your 3rd file to the 2nd place, click on the gray #3 -duration..., hold your finger on the mouse and place the mouse cursor on the 2- duration..., then release it. Your 3rd file is now the second file, and the second file has moved up one position to the third spot.

Another way to merge several files is to add the first one to the treeview. Then, outside of ConvertX open the folder where the videos you want to merge are located. Select the videos using the button 'ctrl' and not drag and drop them over ConvertX to the treeview section and press 'shift' just before releasing the mouse once you are hovering over the titleset you want to merge the videos to.

You can easily remove a file by clicking on the red X icon on its right.

You can insert a file that contains audio and subtitles, or add them manually to each file: Select the subtitle track to be added and repeat for additional video parts if necessary. The added streams will appear in the queue list, below (vertical) the video track:



If you click on the + icon under "queue list", you will get additional technical information about the files added.

Note: If merge 2 video files and add a subtitle file to the first video, the subtitle file if long enough will play through both merged video files.

Note: the settings applied in the other preview tabs will also apply to the "merged" files, behaving as one single titleset. This is true for all the settings such as rotate, and offsets for example set to subtitles and audio files. If you apply and offset to a video (which is infact 2 merged videos) the offset will be in the first and 2nd video.

Note: For COnvertXtoDVD only, the maximum number of files that can be merged is 99. You cannot have more then 99 chapters in a Titleset because on most DVD remote controls not select above 99 (2 digits max, -/ --). Every merged file adds automatically a start chapter point in the titleset. Reason is that currently all merged files make a chapter at merge point, so limit on files to merge is 99 a limit set by DVD standard not by ConvertXtoDVD.

Other quick links

- Batch conversion : <http://forums.vso-software.fr/convertxtodvd-batcher-beta-t19034.html>
- Burn another copy : <http://forums.vso-software.fr/how-to-save-and-burn-another-copy-of-your-converted-files-t7209.html>
- Add or edit subtitles : see Subtitle streams section of this guide
- Convert PAL to NTSC or vice versa <http://forums.vso-software.fr/guide-how-to-convert-ntsc-to-pal-or-pal-to-ntsc-t3077.html>
- How to remove commercials or other unwanted sections of a video : see Cut section of this guide, page 53